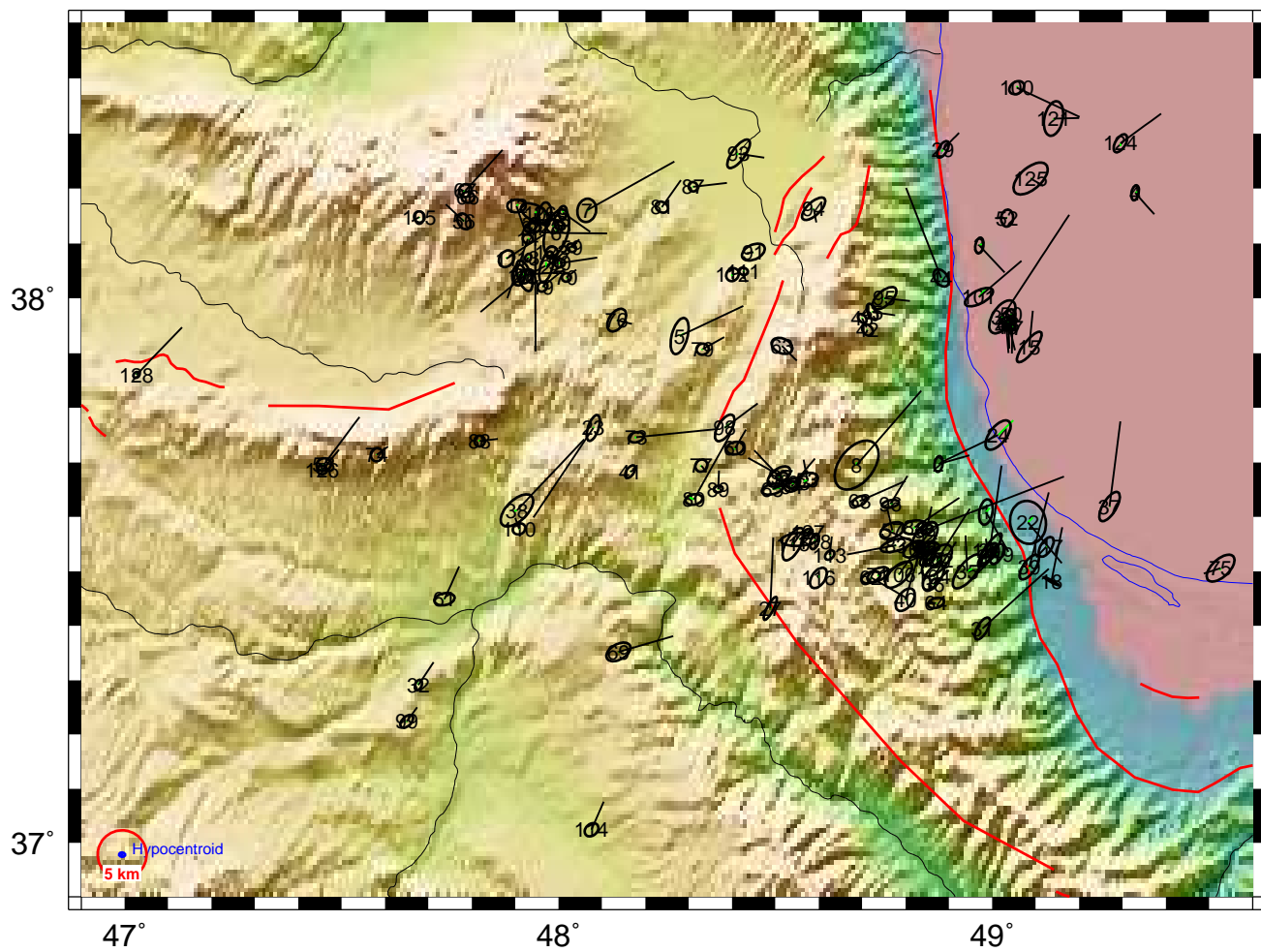
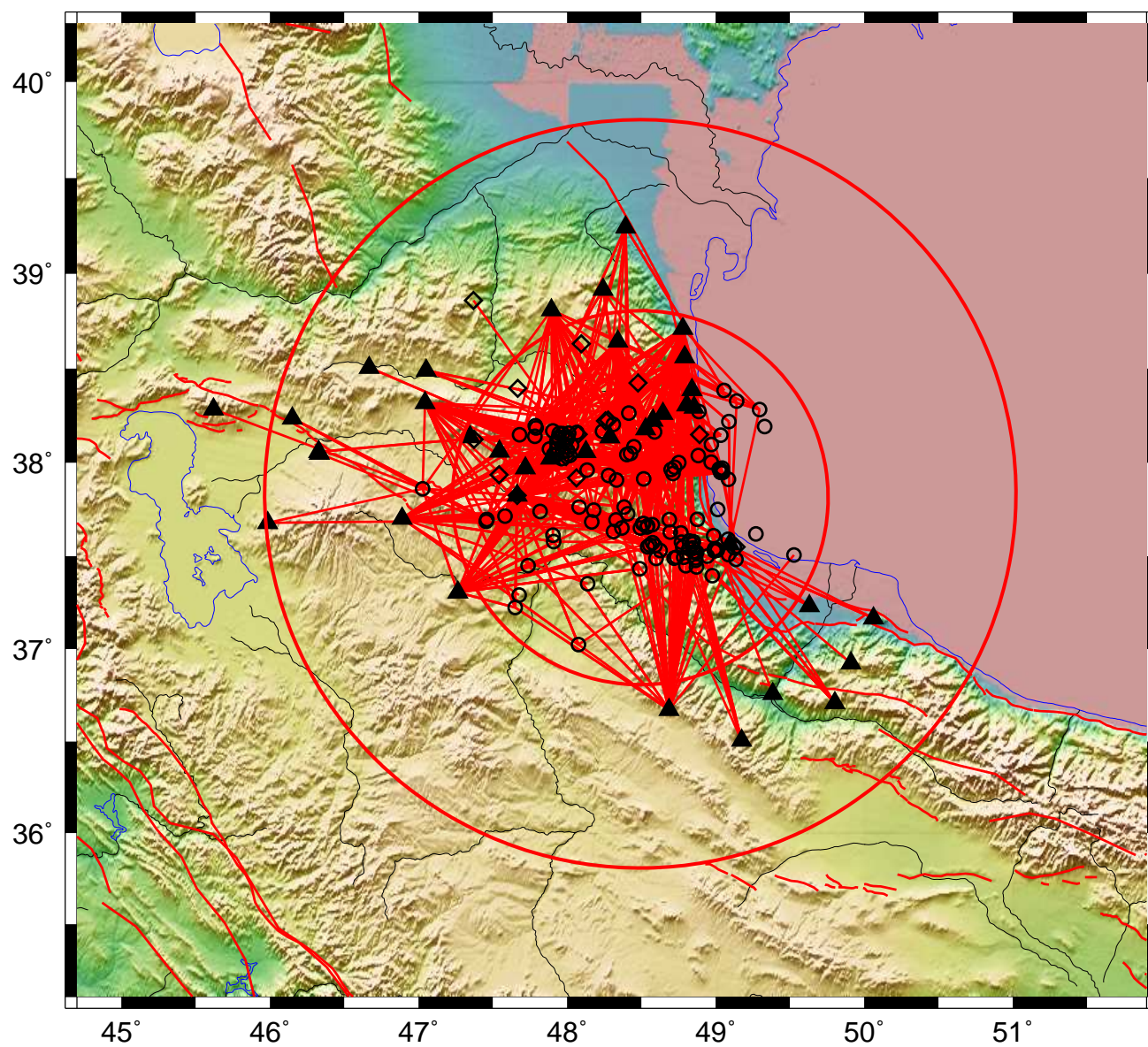


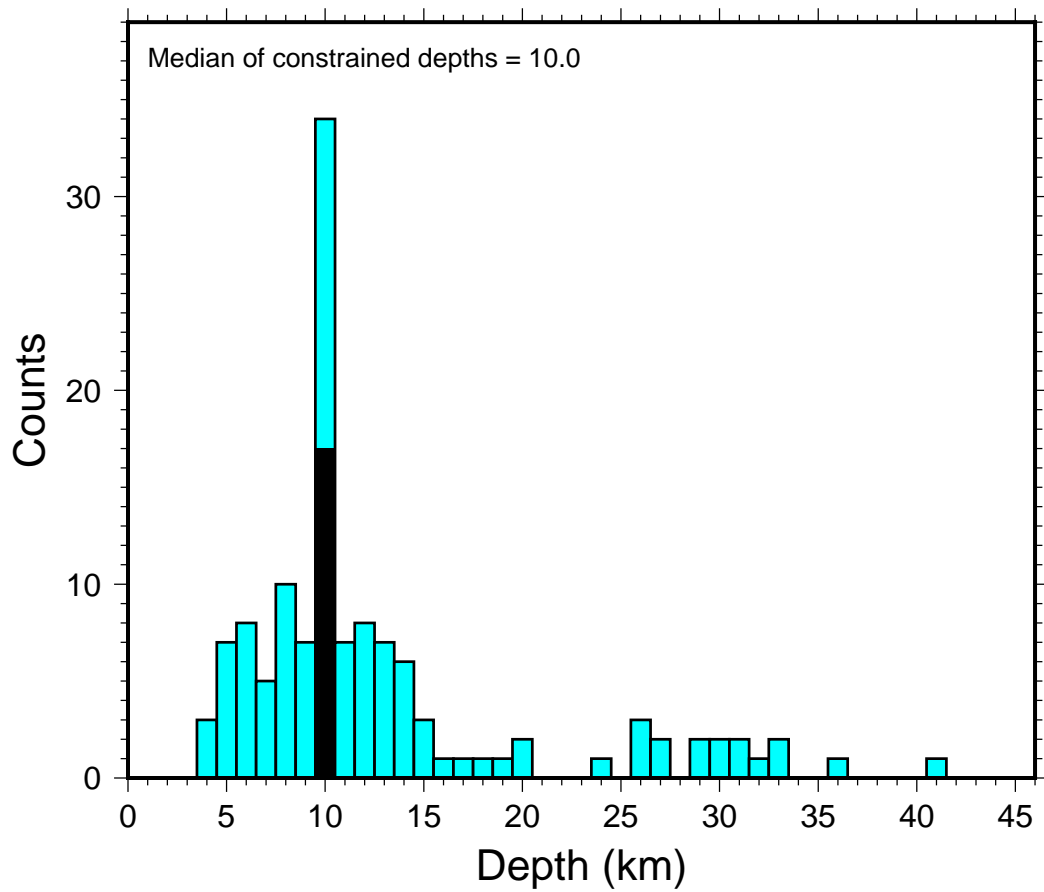
## Base Map talesh6.33



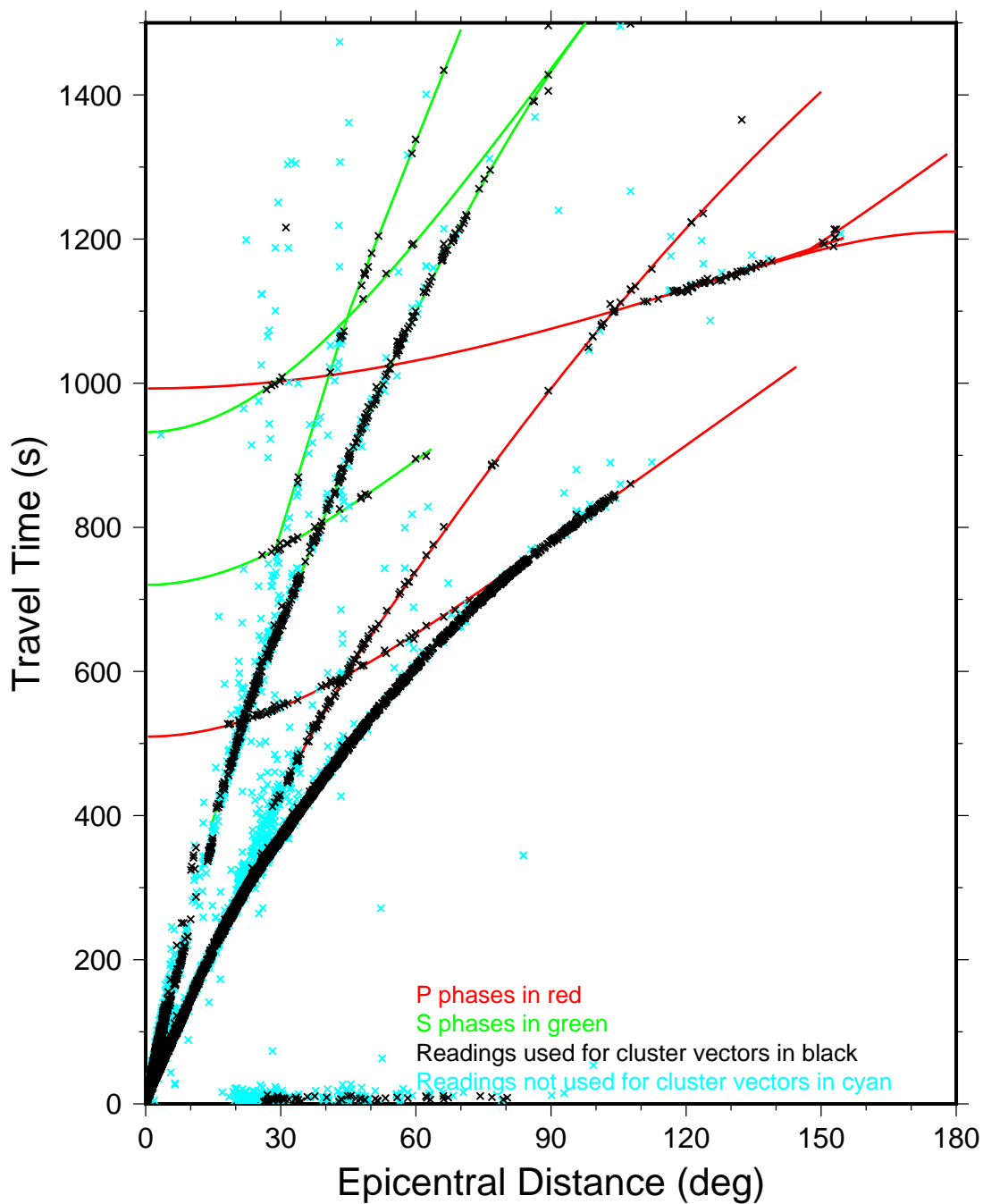
## Direct Calibration talesh6.33



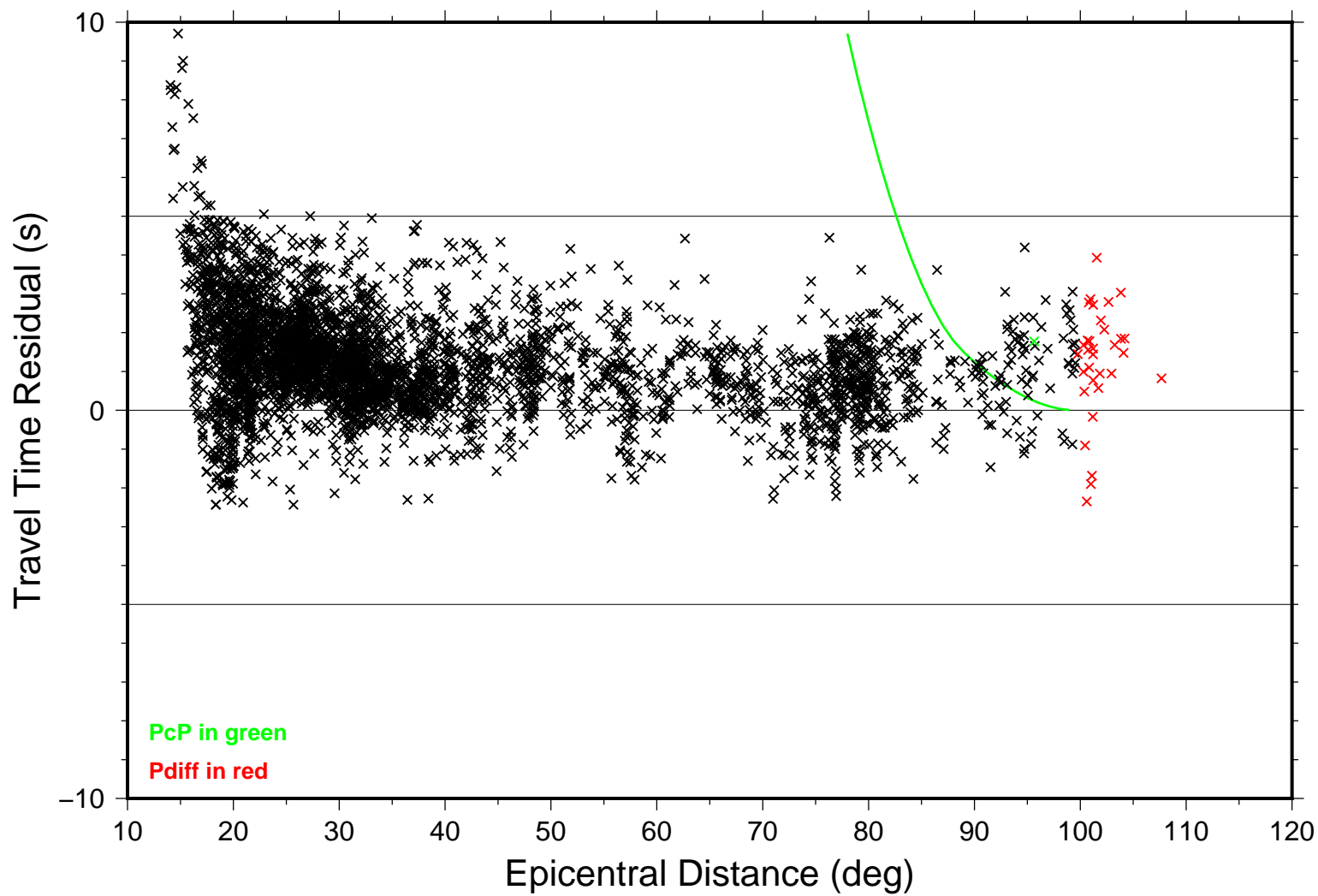
## Focal Depths talesh6.33



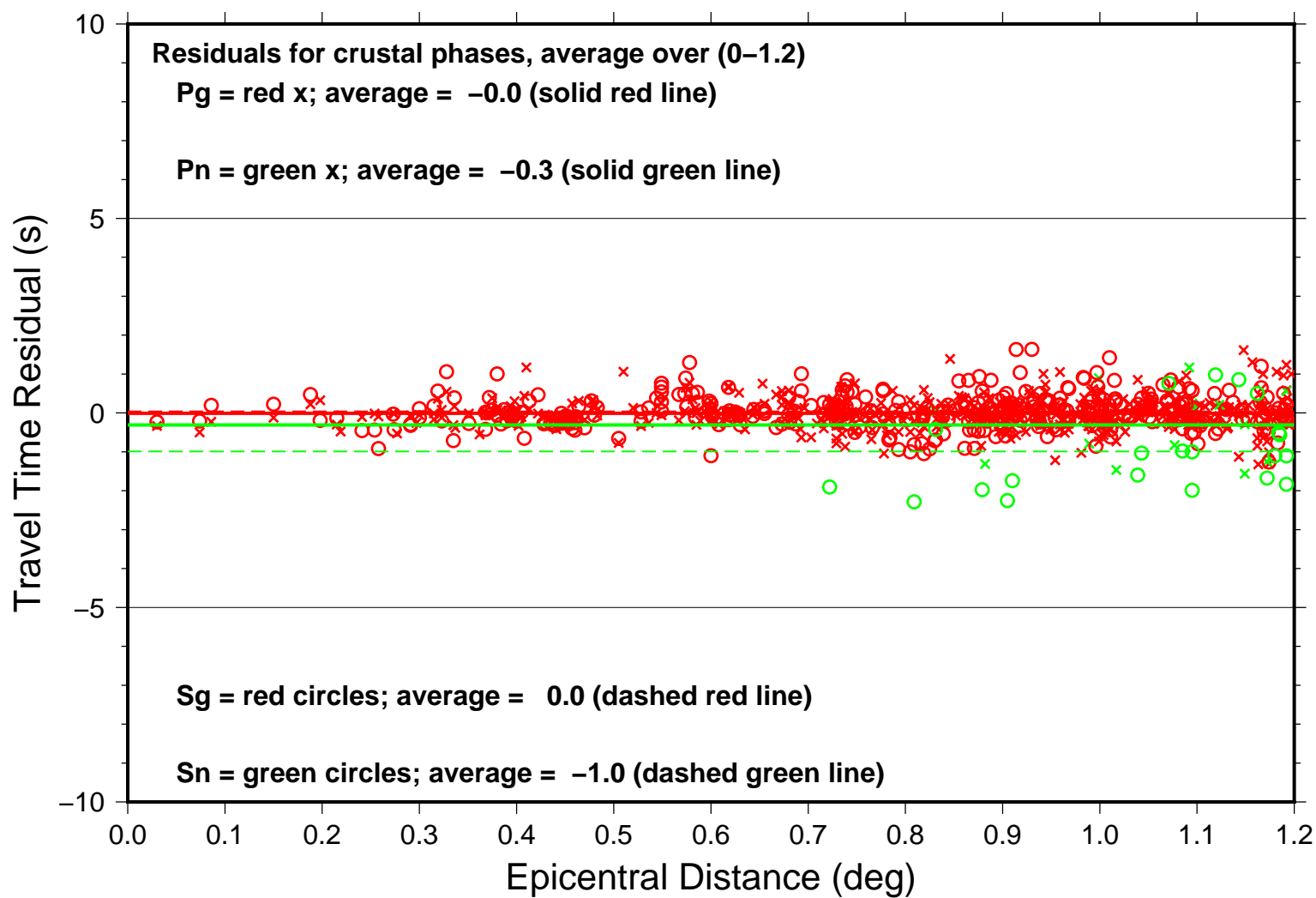
## Summary Travel Times talesh6.33



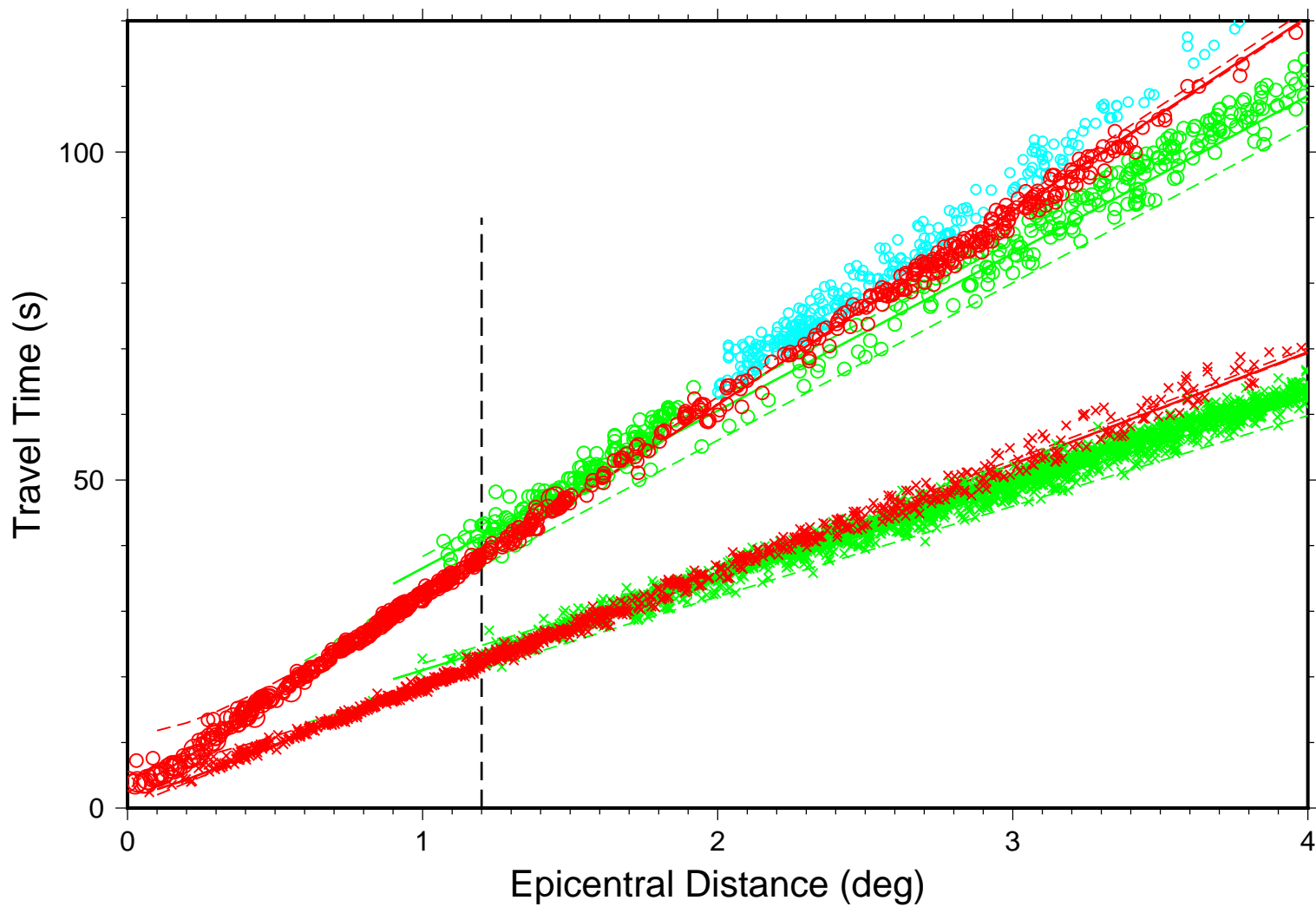
# Teleseismic P talesh6.33



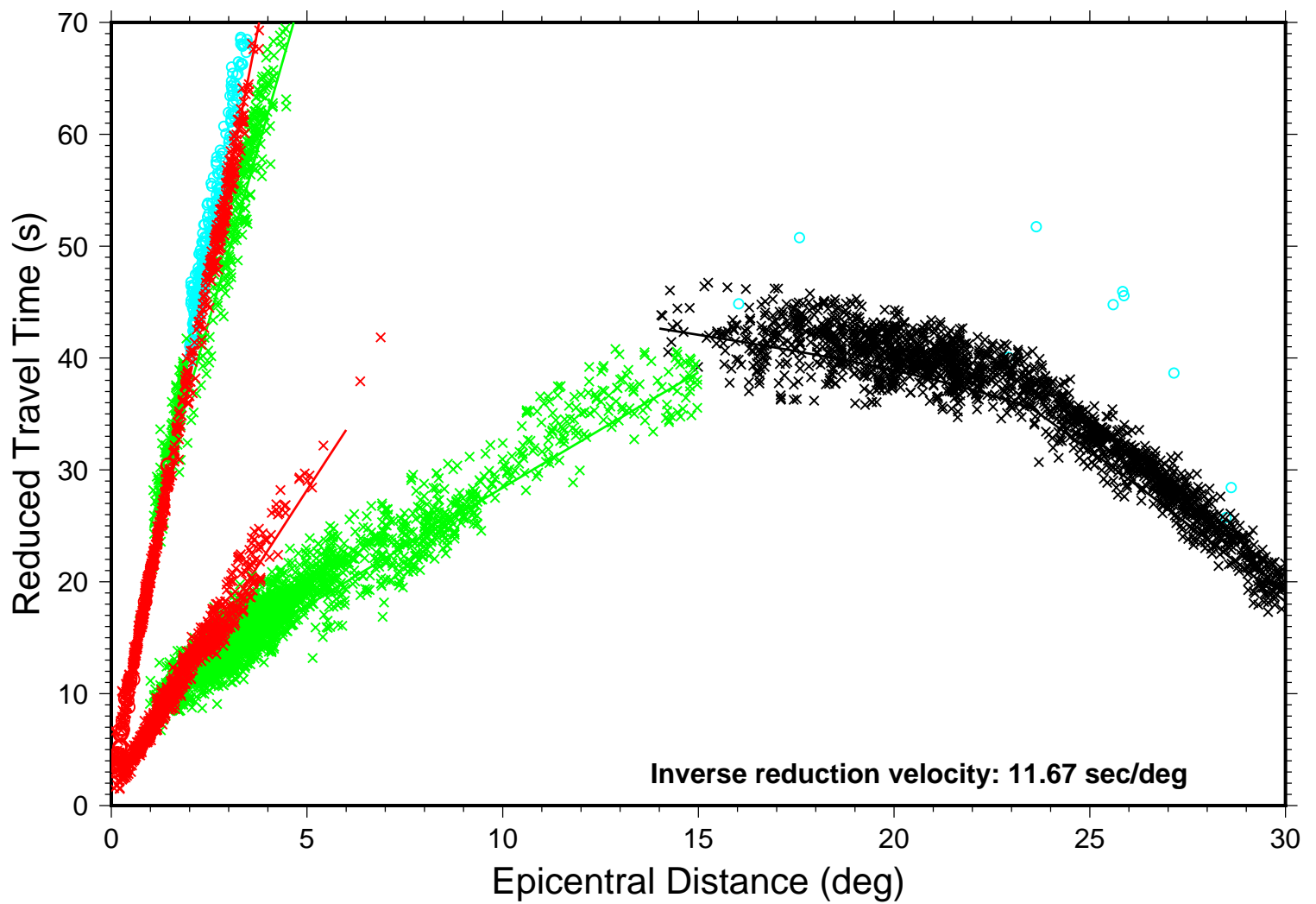
## Near-Source talesh6.33



## Local Distance talesh6.33



## Local-Regional talesh6.33





# Local-Regional Shear Phases talesh6.33

