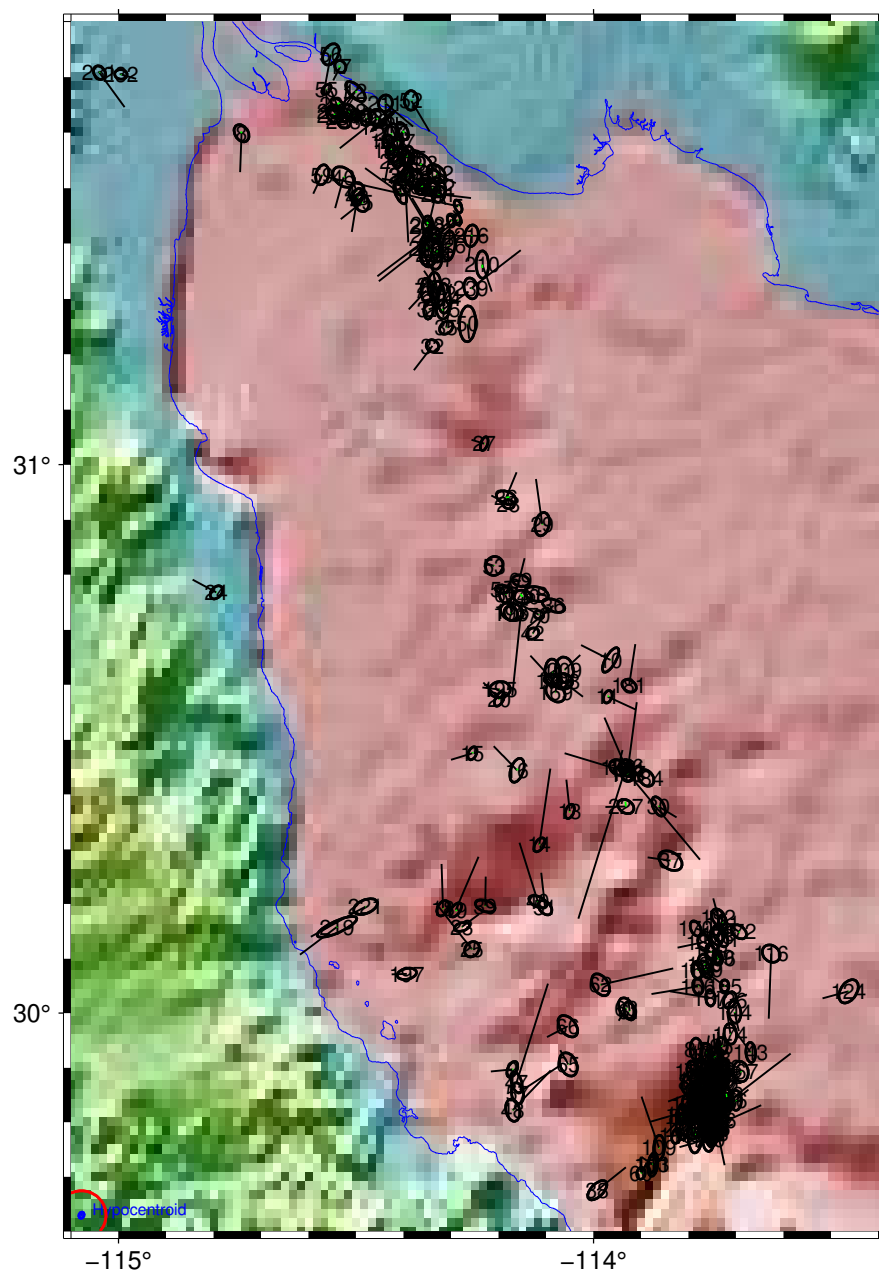
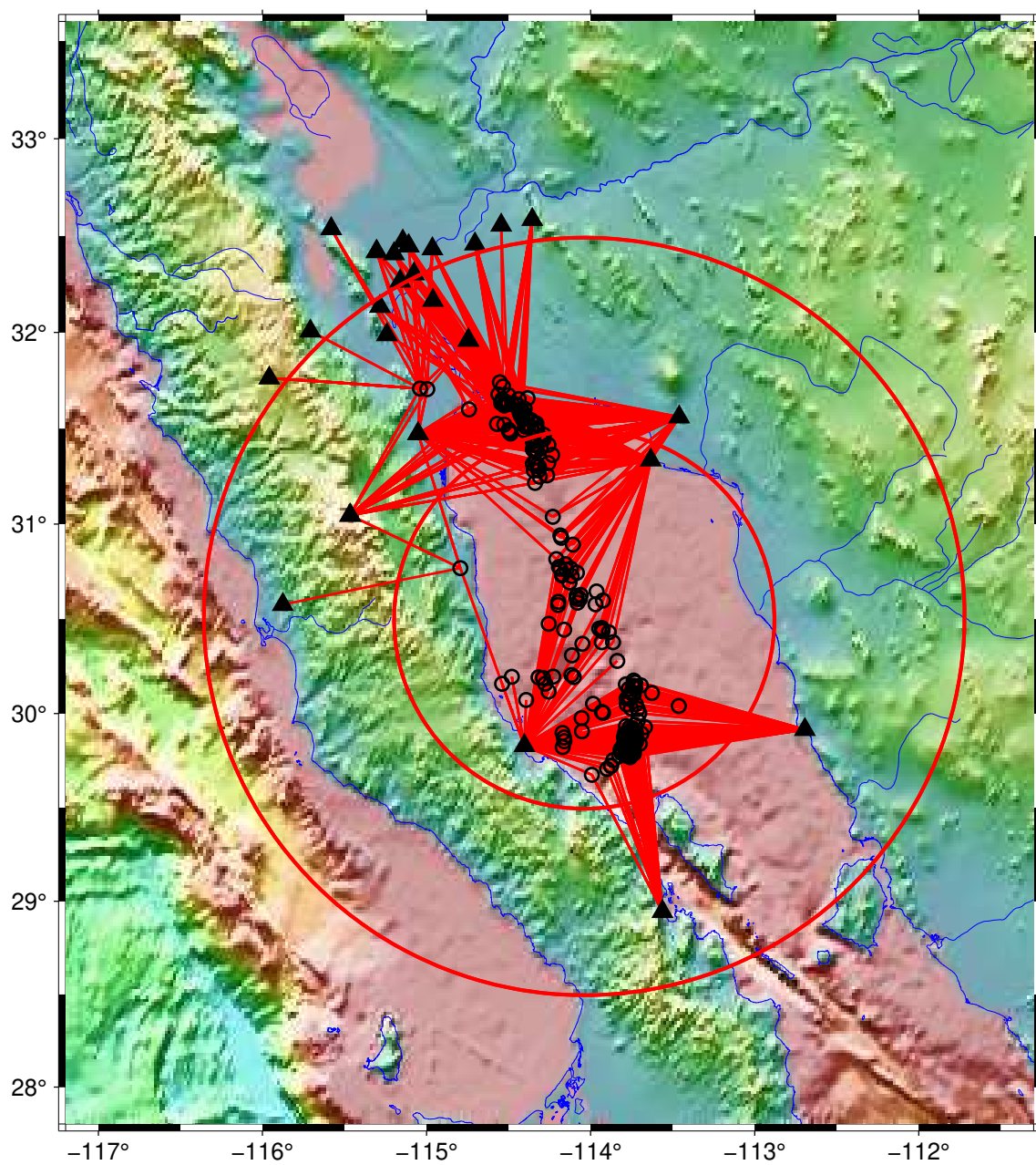


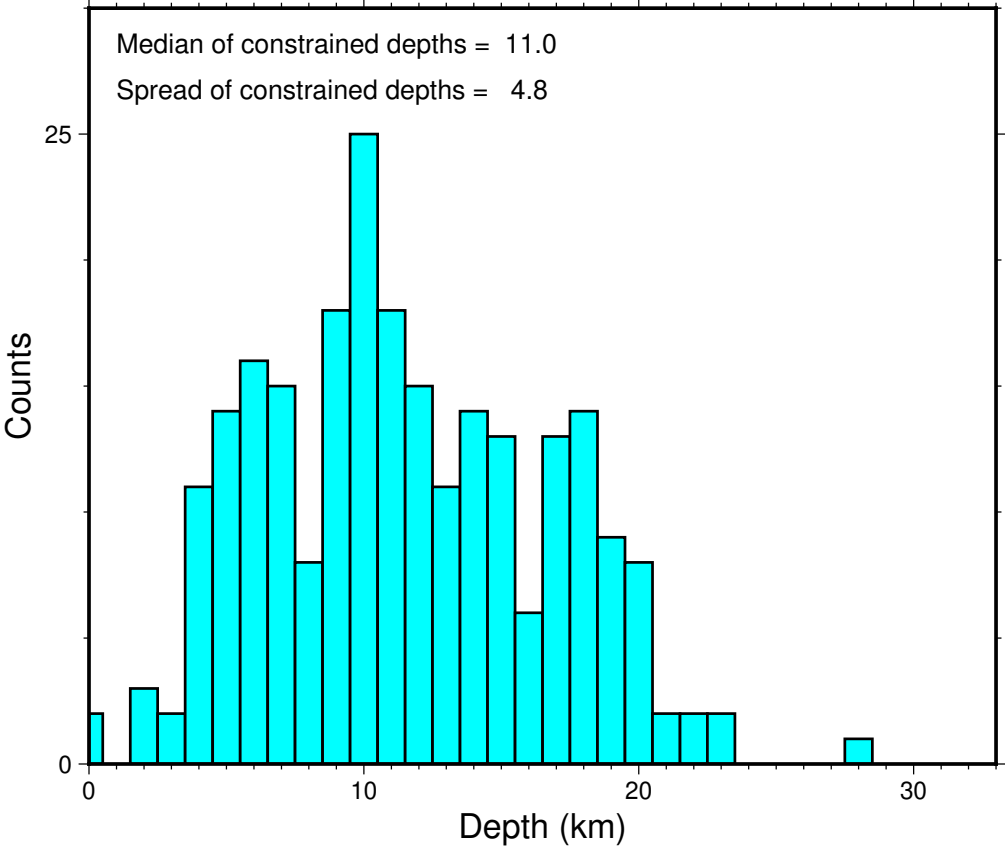
# Base Map penasco2.16



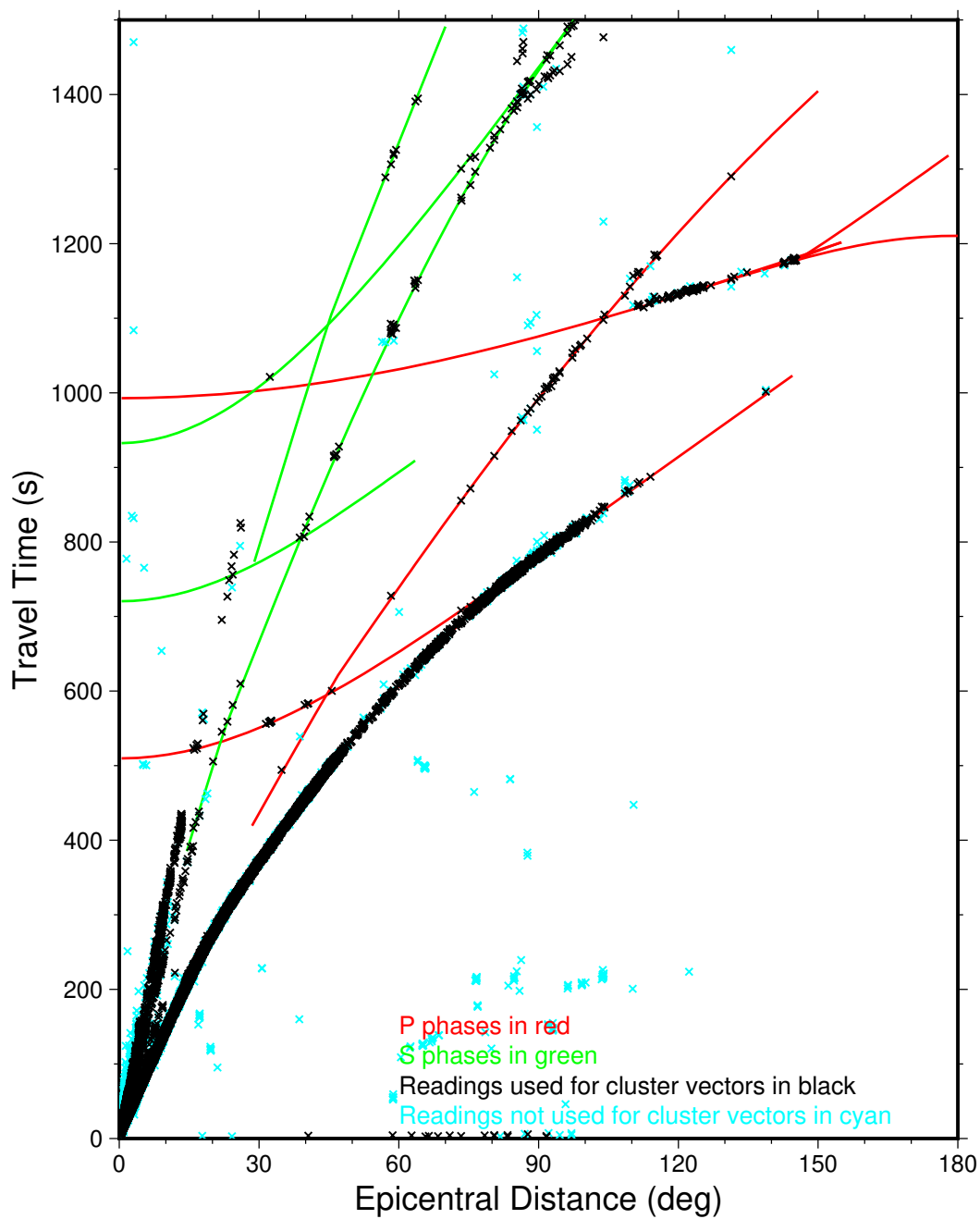
## Direct Calibration penasco2.16



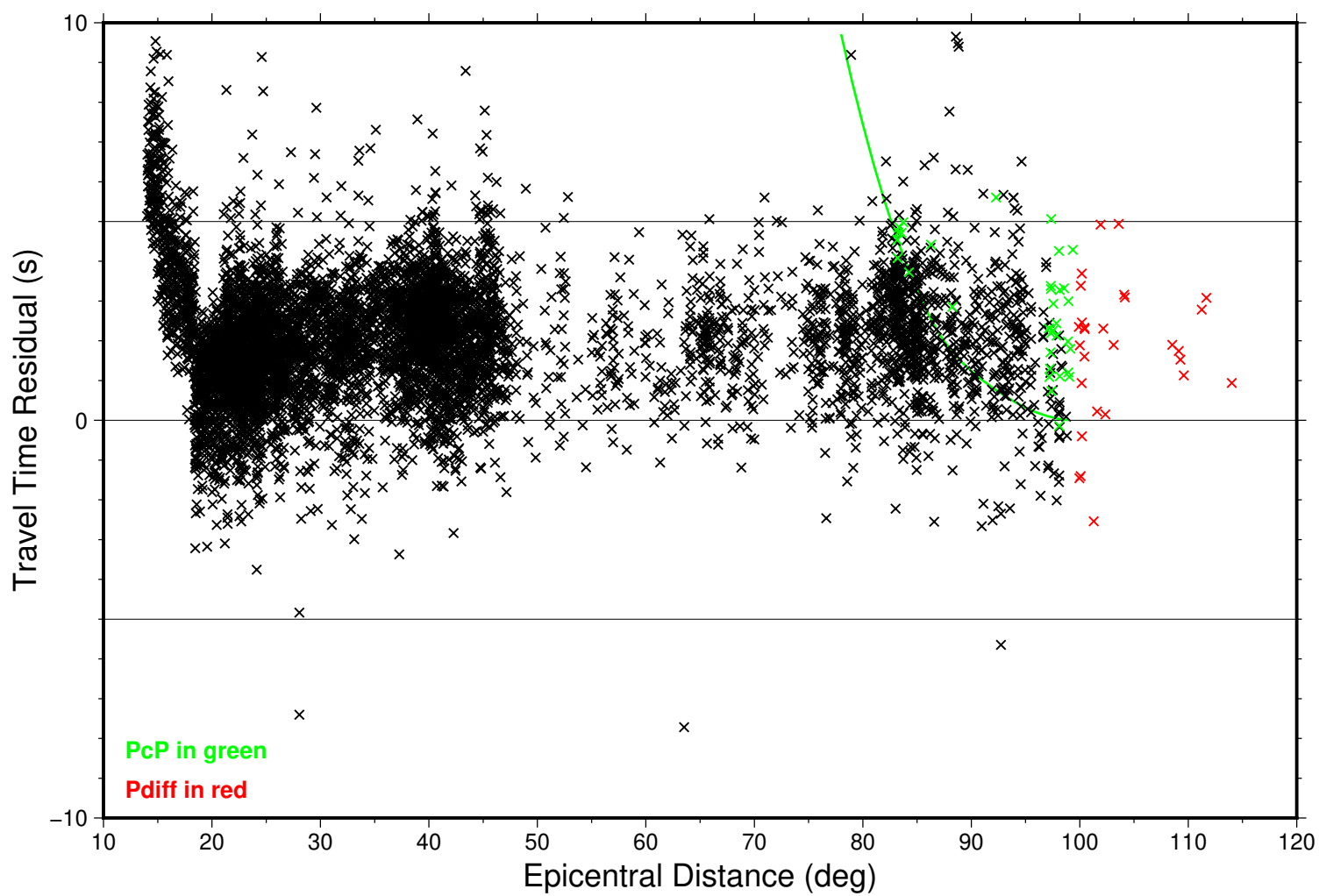
# Focal Depths penasco2.16



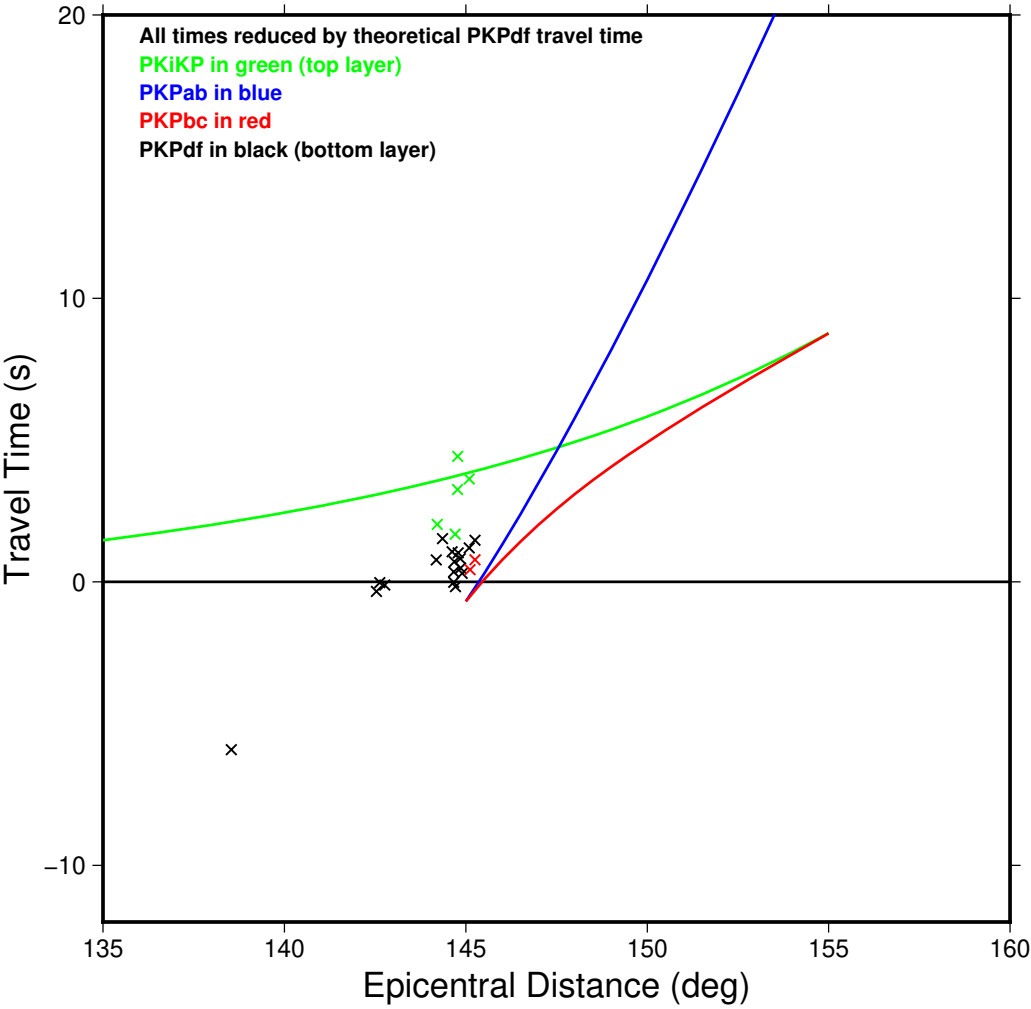
## Summary Travel Times penasco2.16



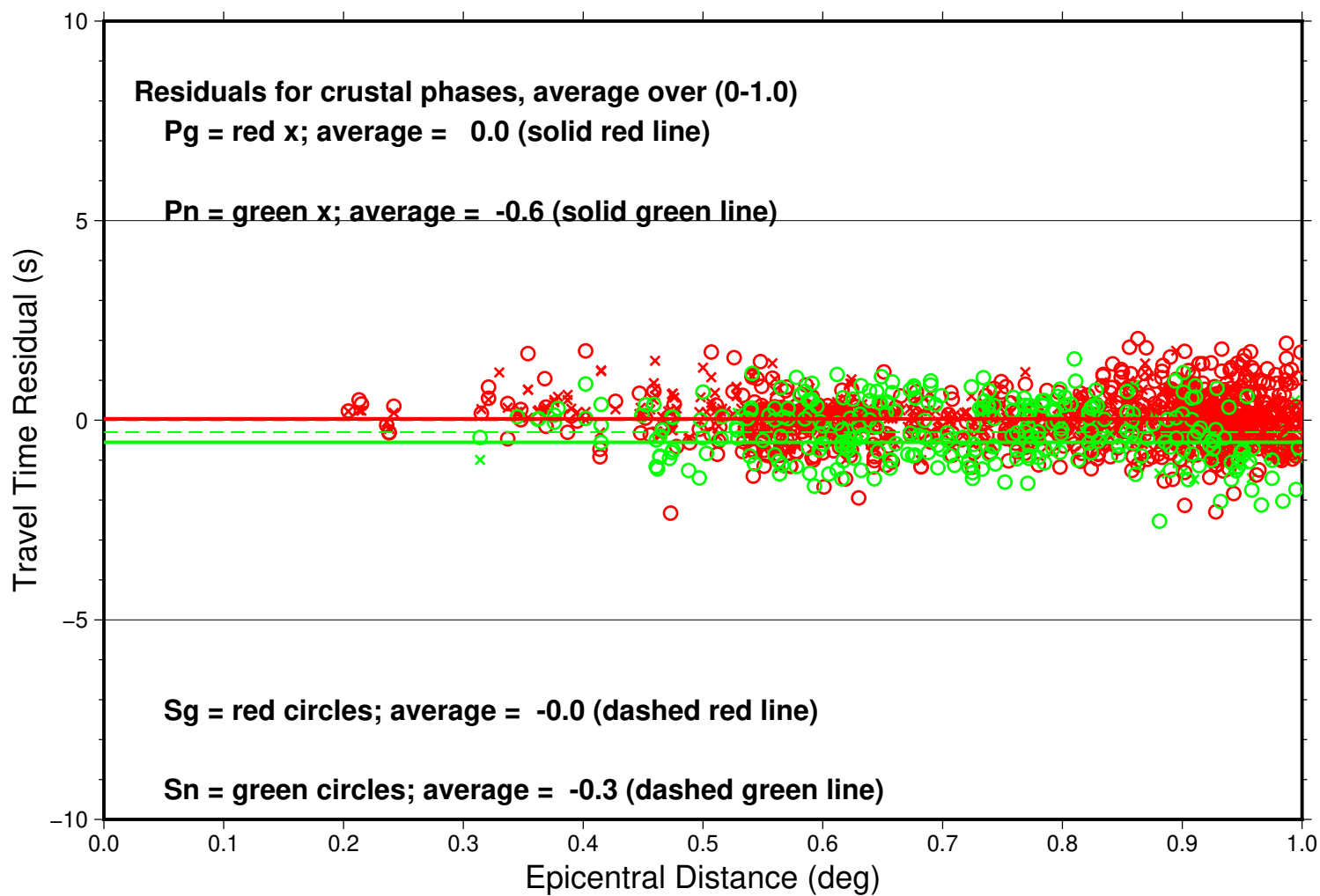
# Teleseismic P penasco2.16



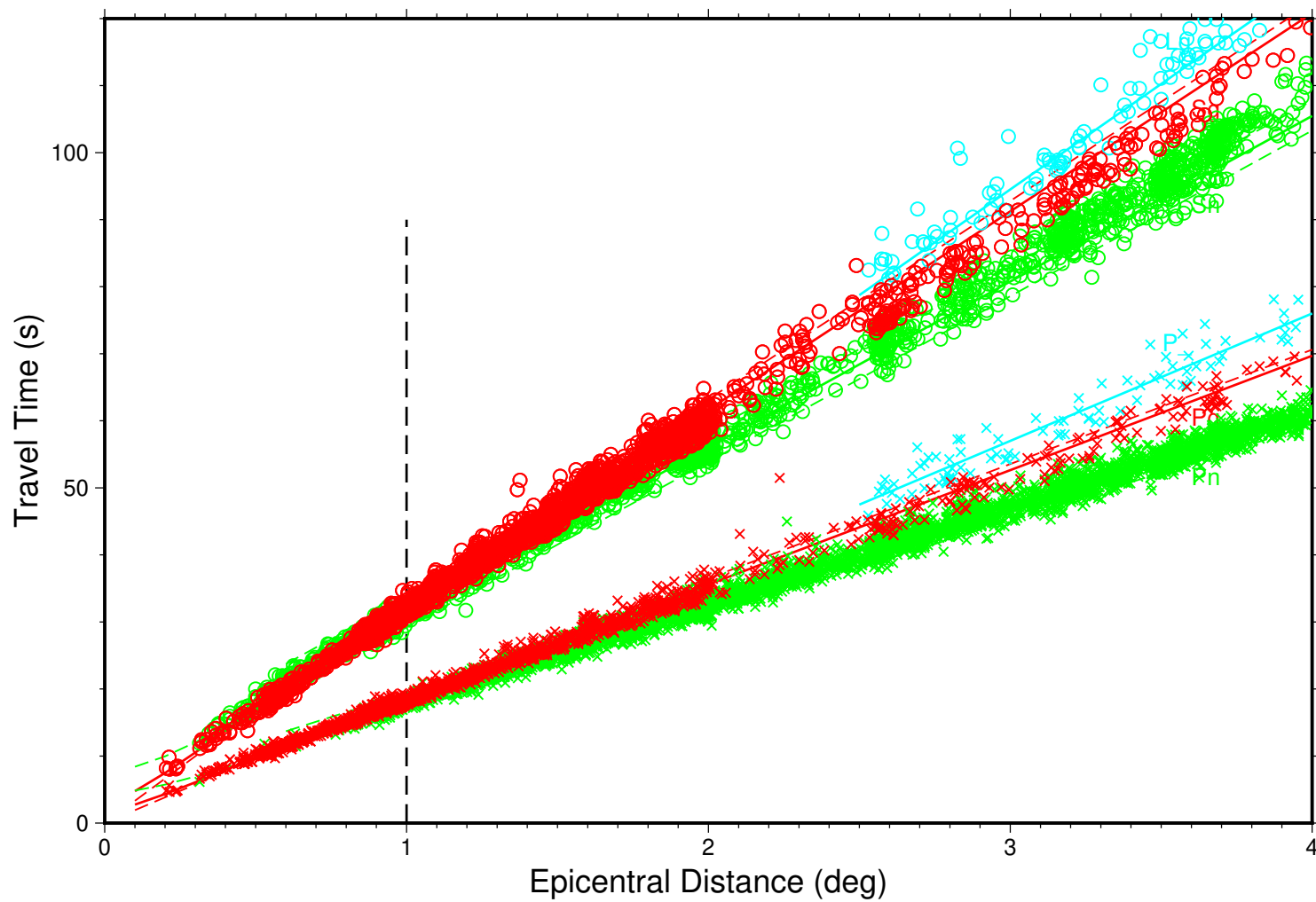
# PKP Caustic penasco2.16



## Near-Source penasco2.16

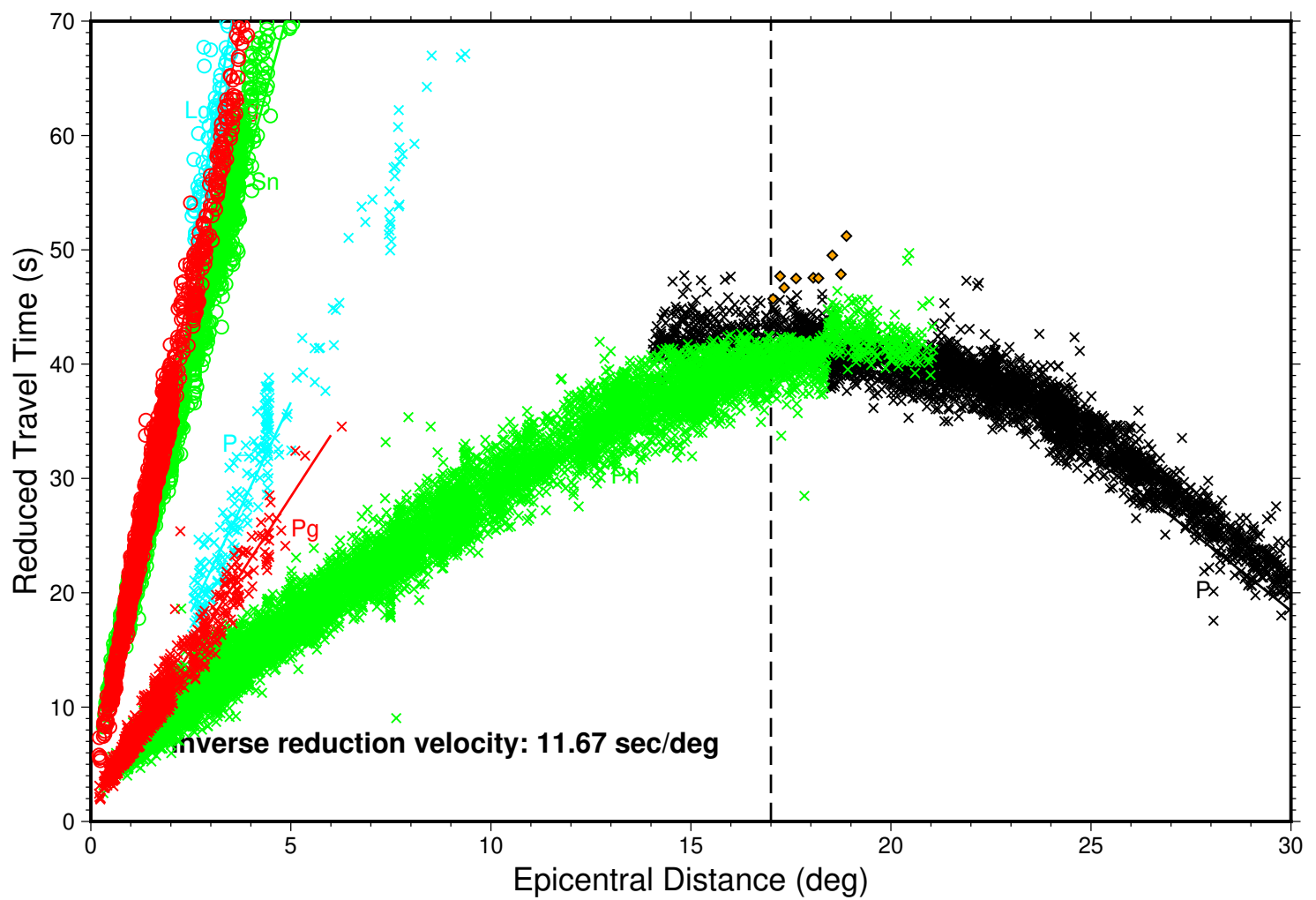


## Local Distance penasco2.16





## Local-Regional penasco2.16



# Local-Regional Shear Phases penasco2.16

