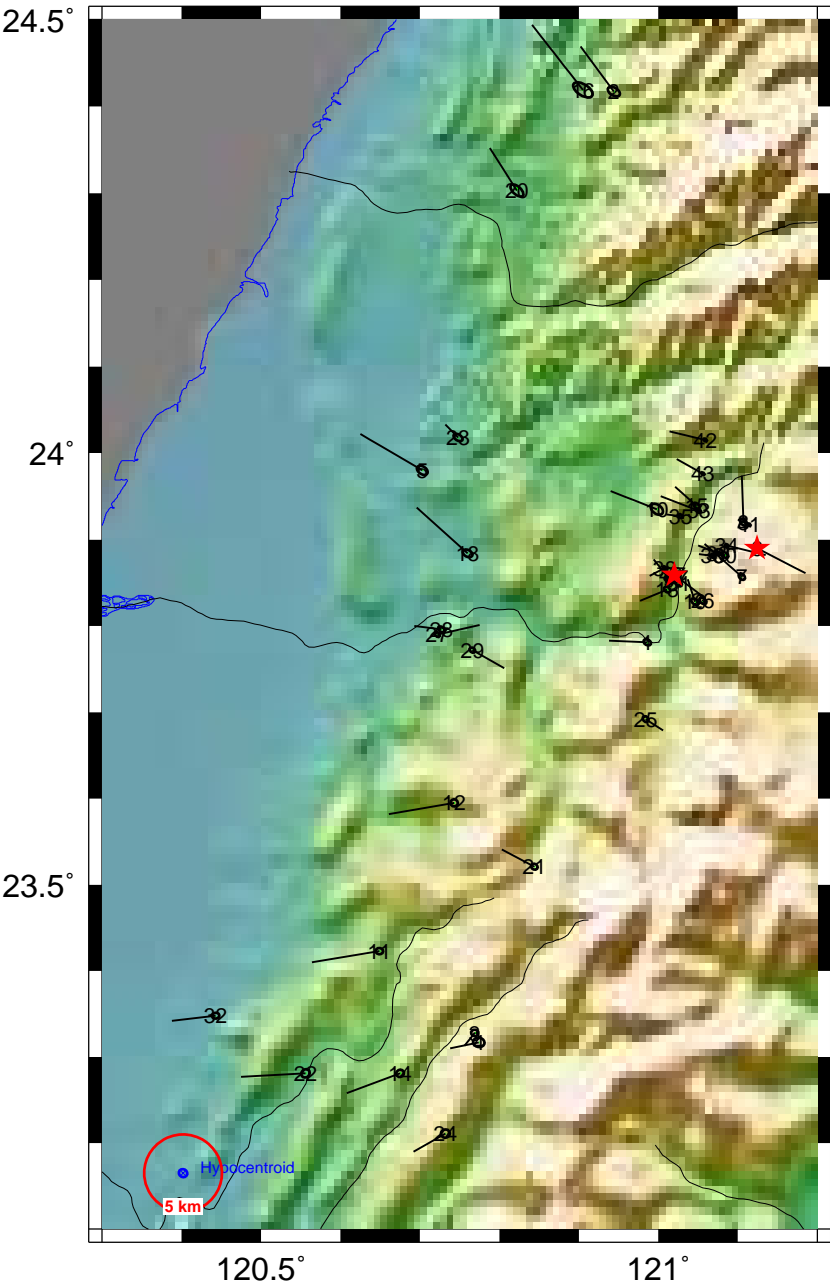
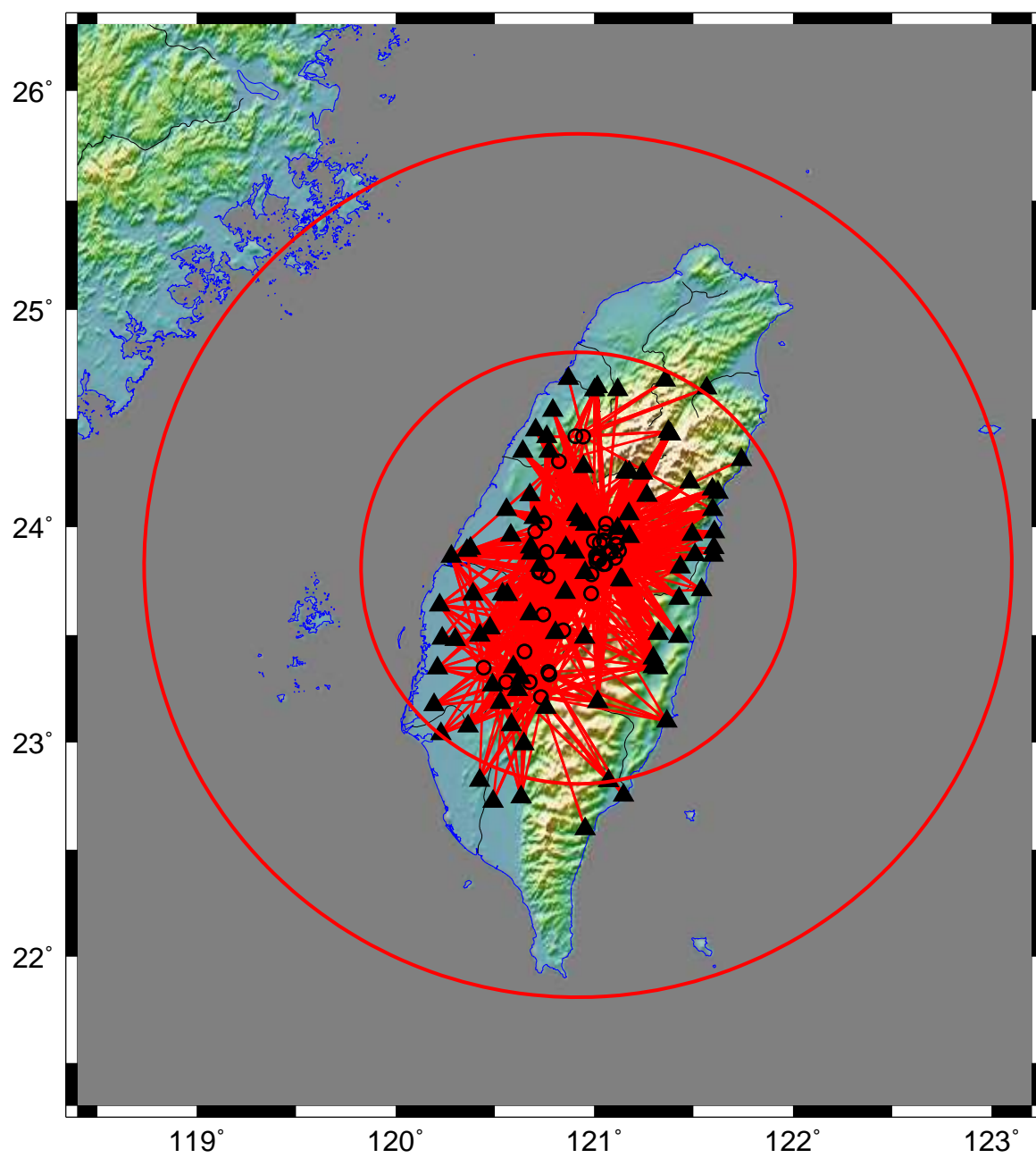


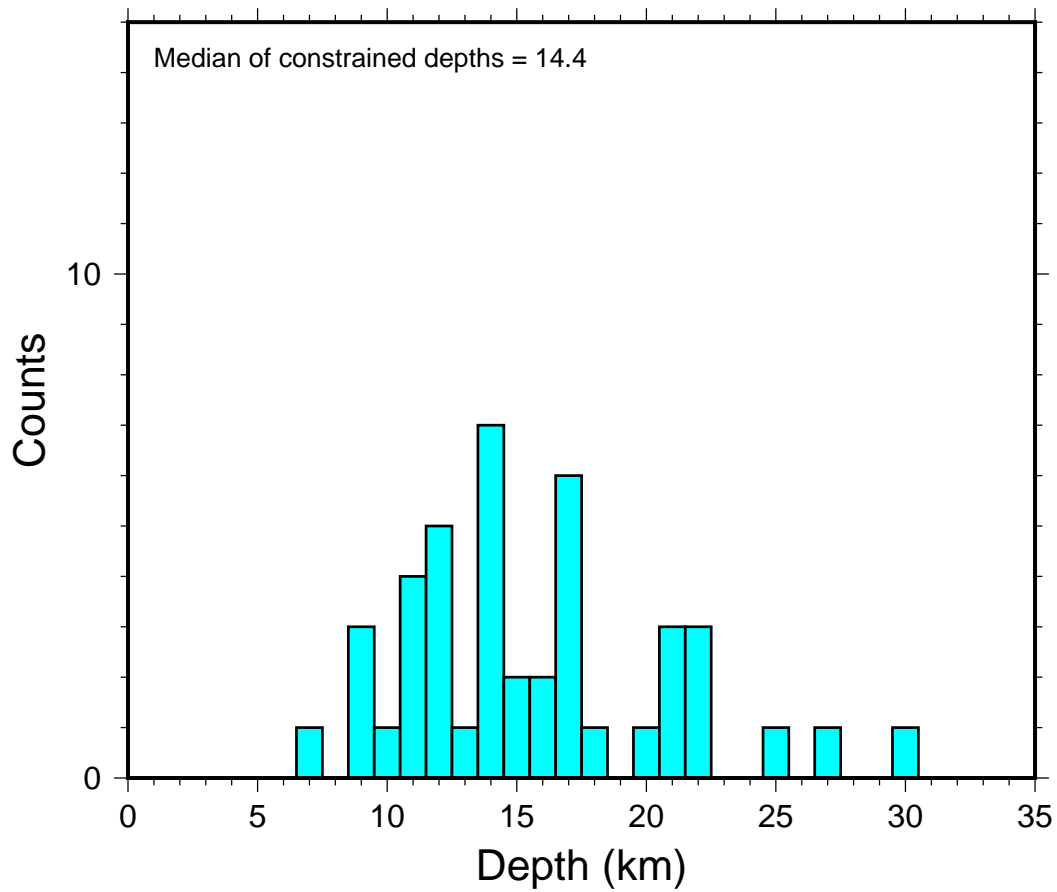
Base Map nantou1.21



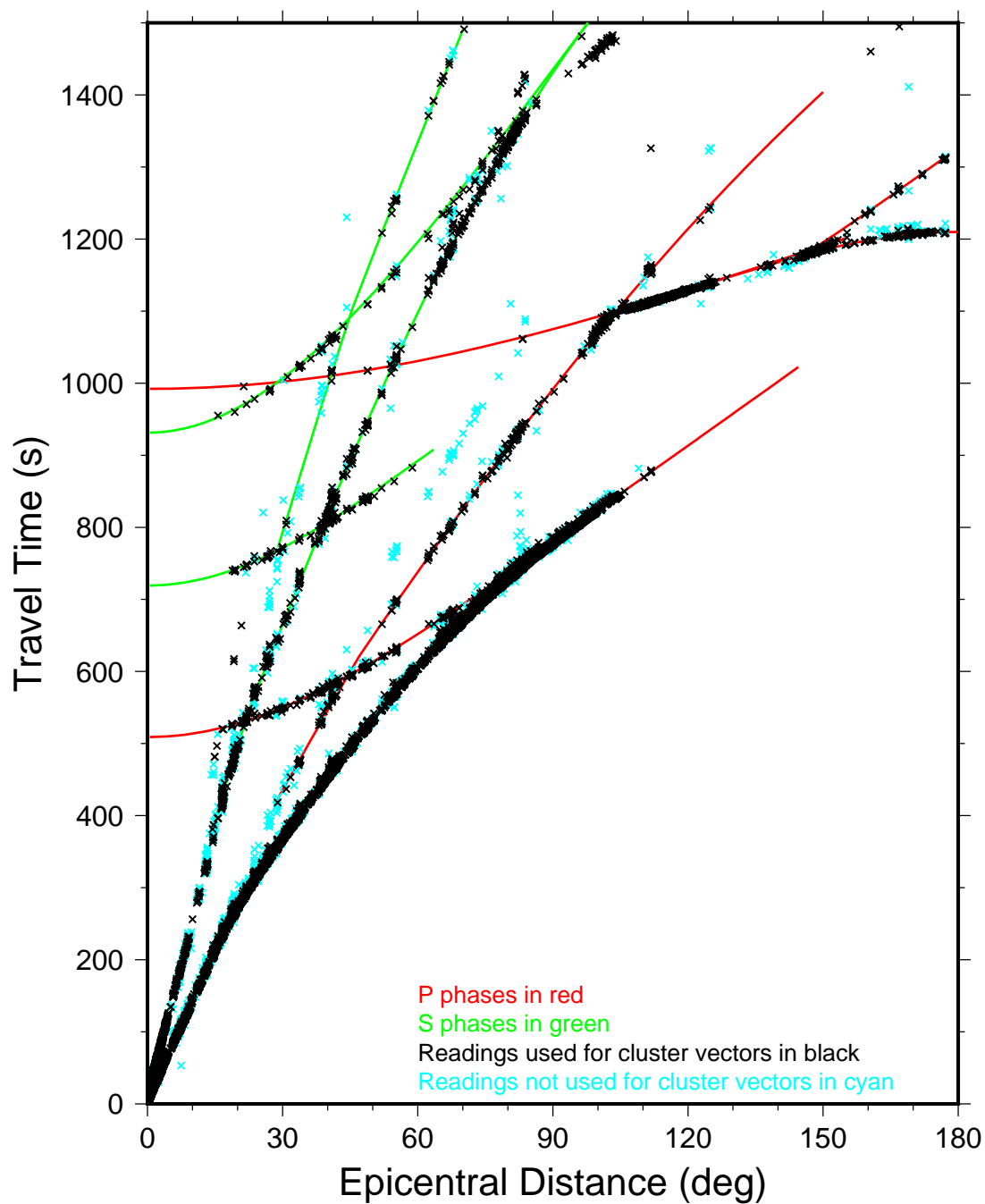
## Direct Calibration nantou1.21



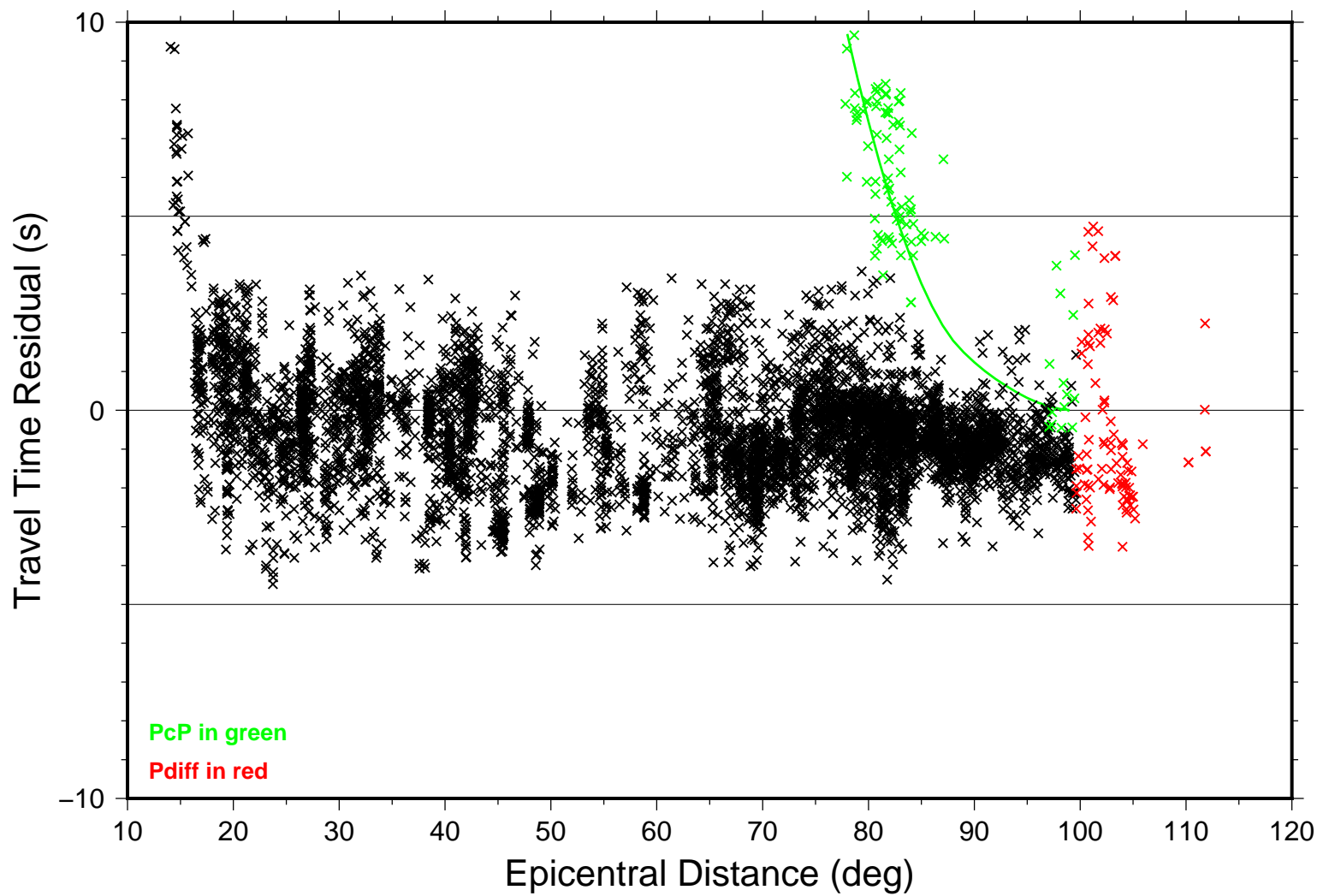
## Focal Depths nantou1.21



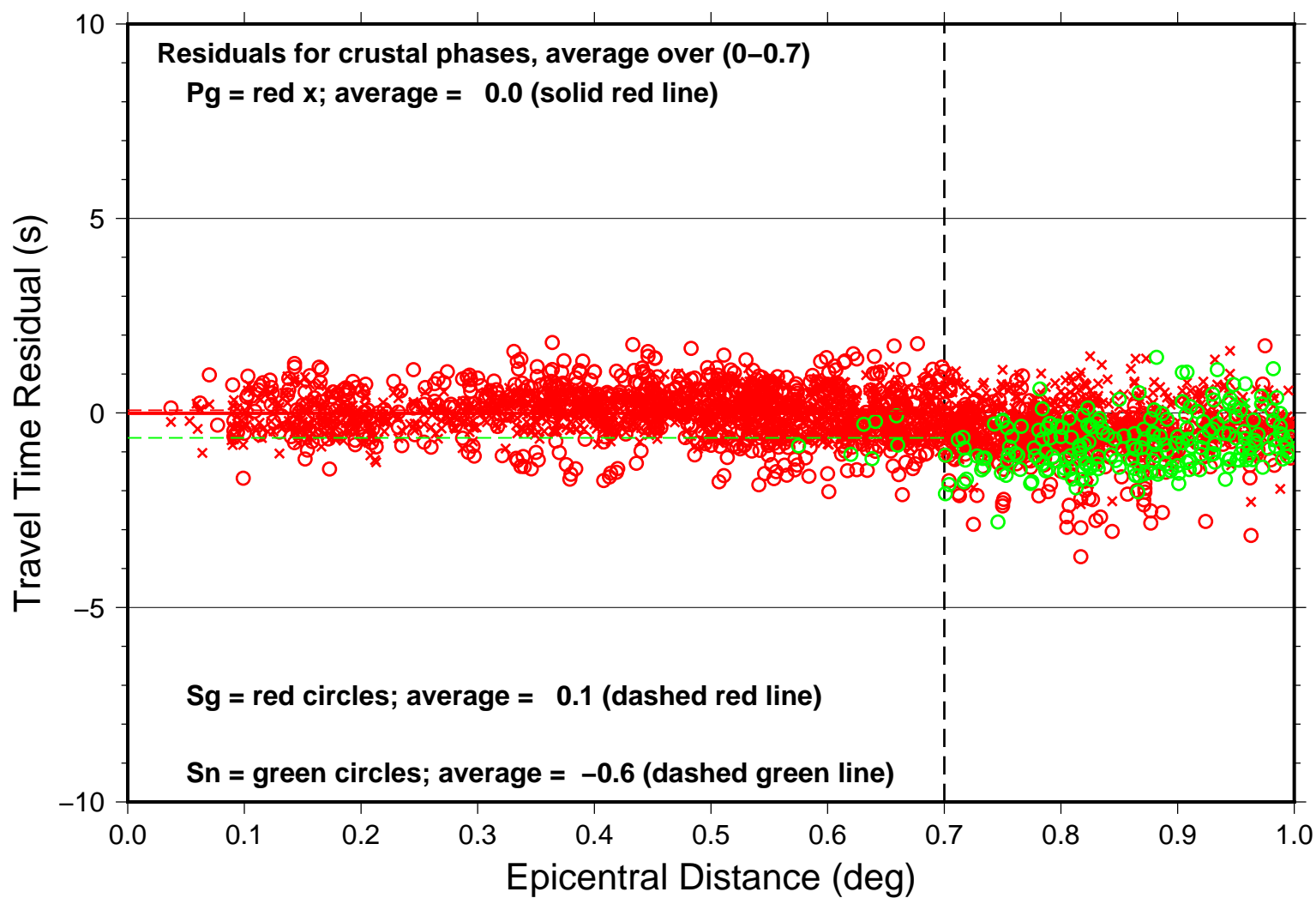
# Summary Travel Times nantou1.21



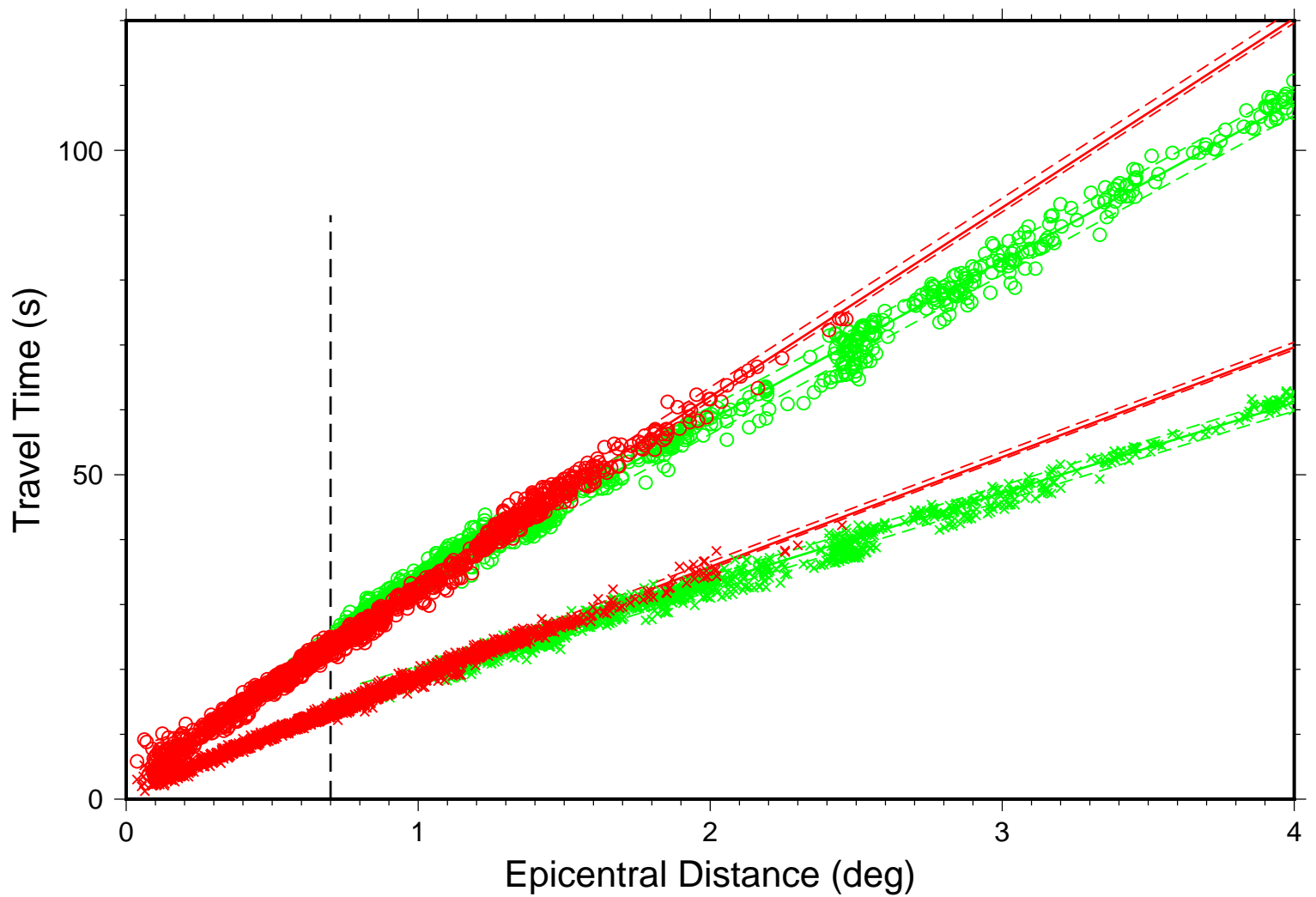
# Teleseismic P nantou1.21



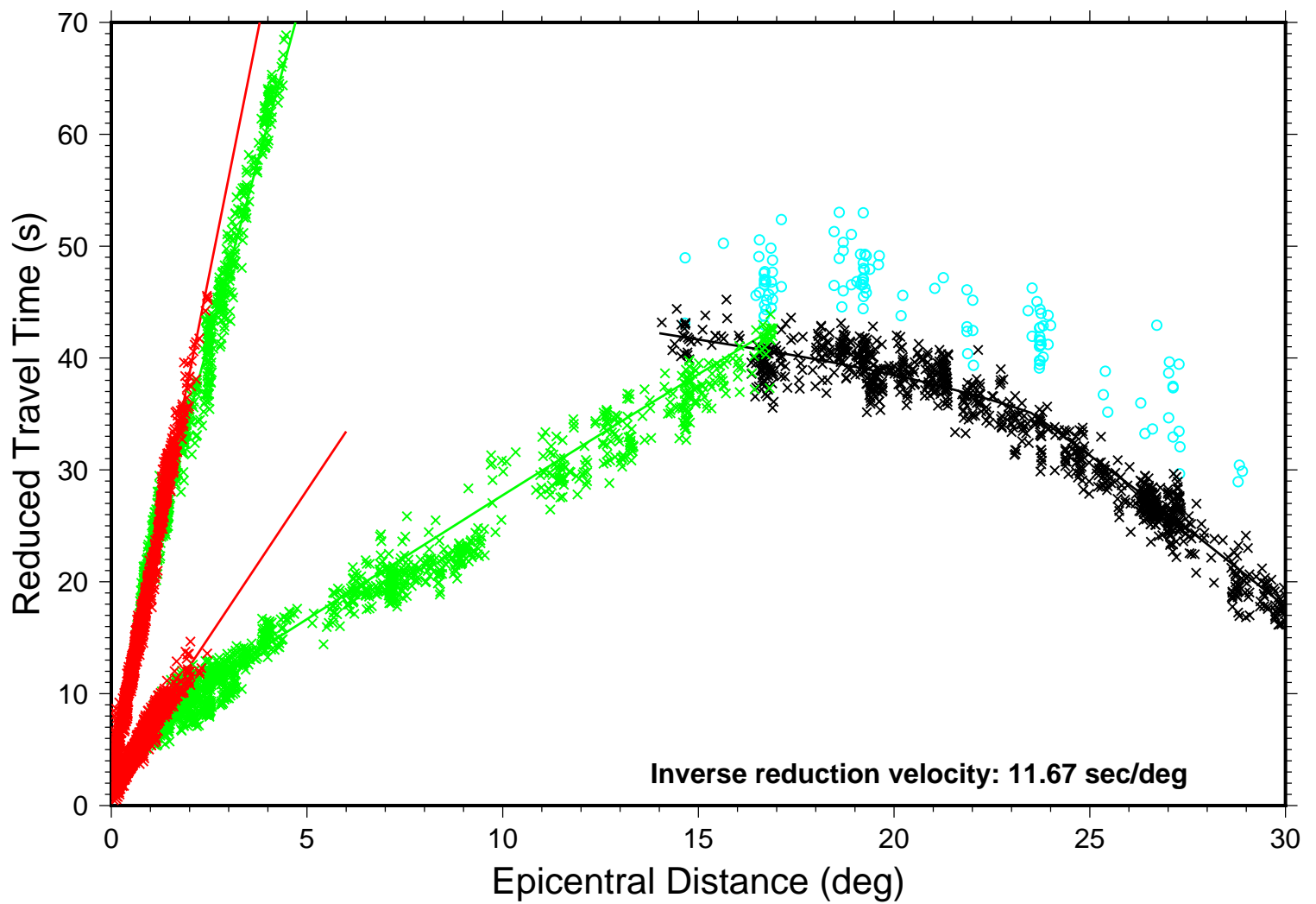
## Near-Source nantou1.21



# Local Distance nantou1.21



# Local-Regional nantou1.21





# Local–Regional Shear Phases nantou1.21

