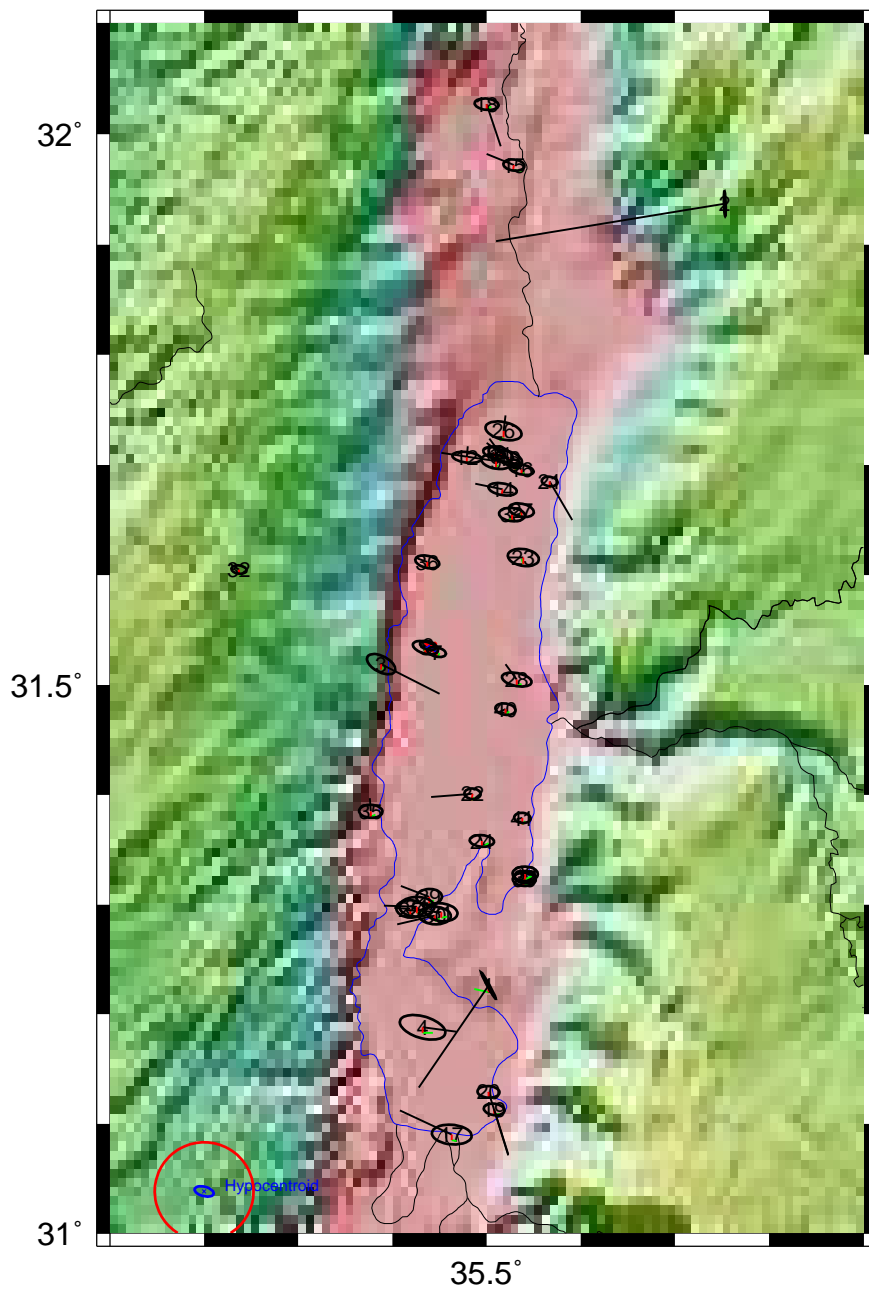
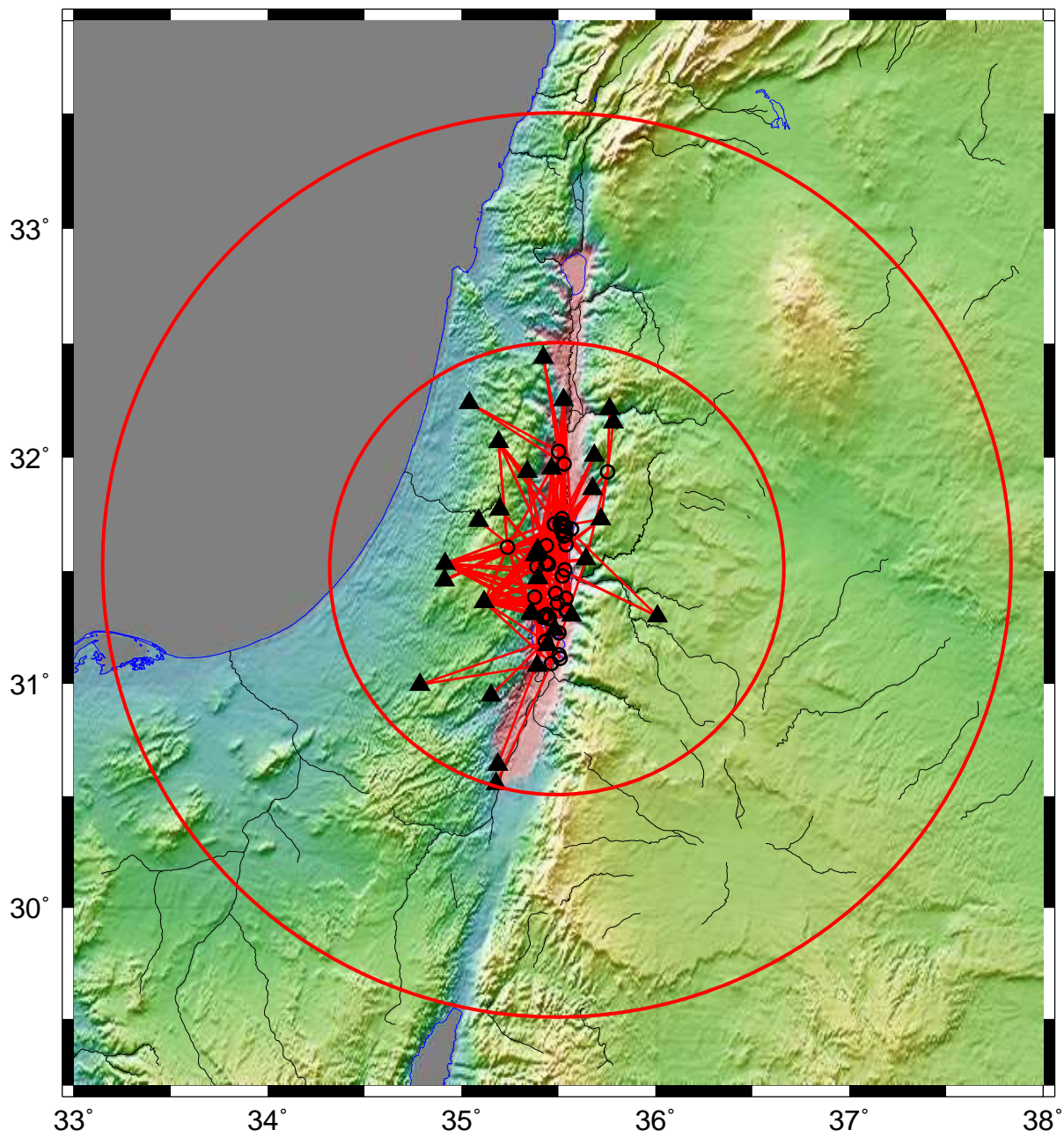


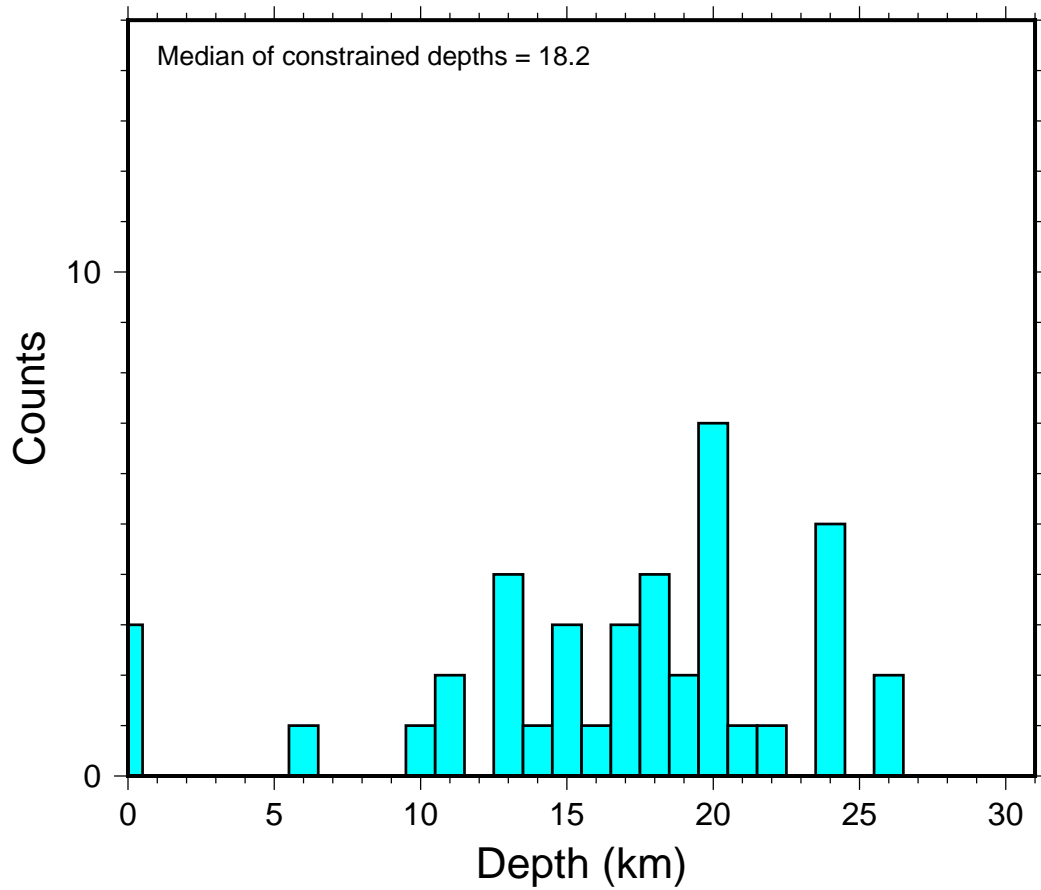
## Base Map deadsea5.11



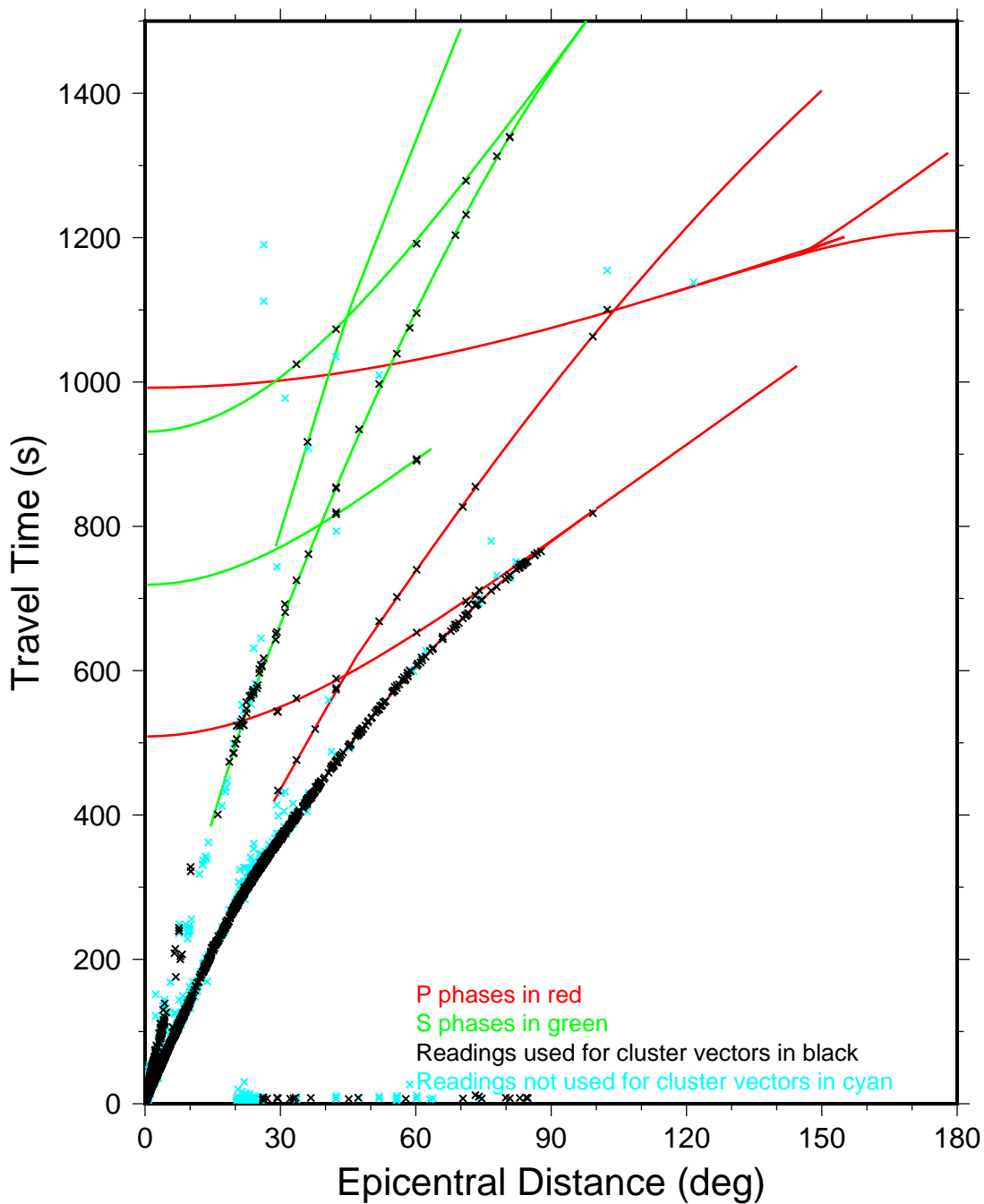
## Direct Calibration deadsea5.11



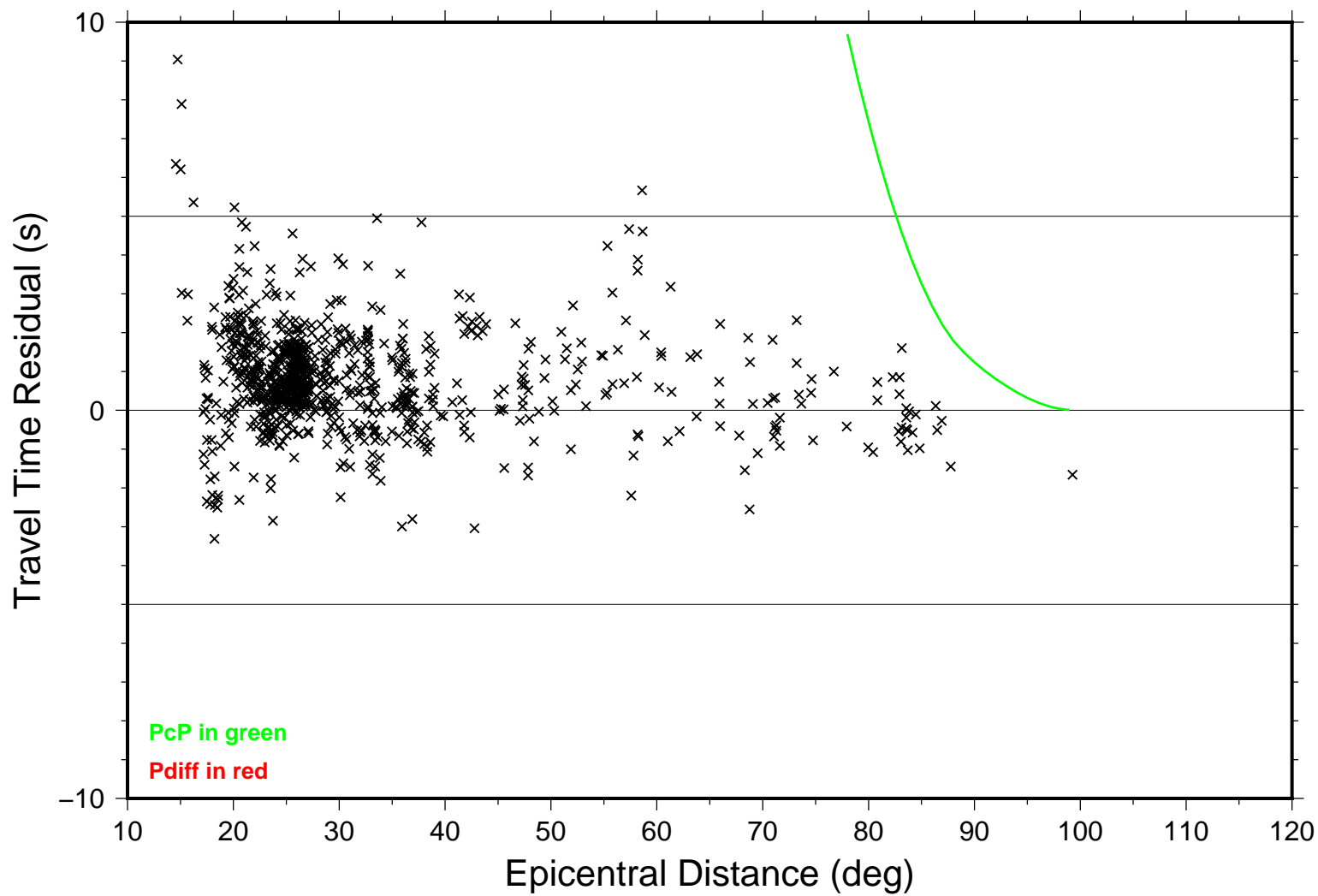
# Focal Depths deadsea5.11



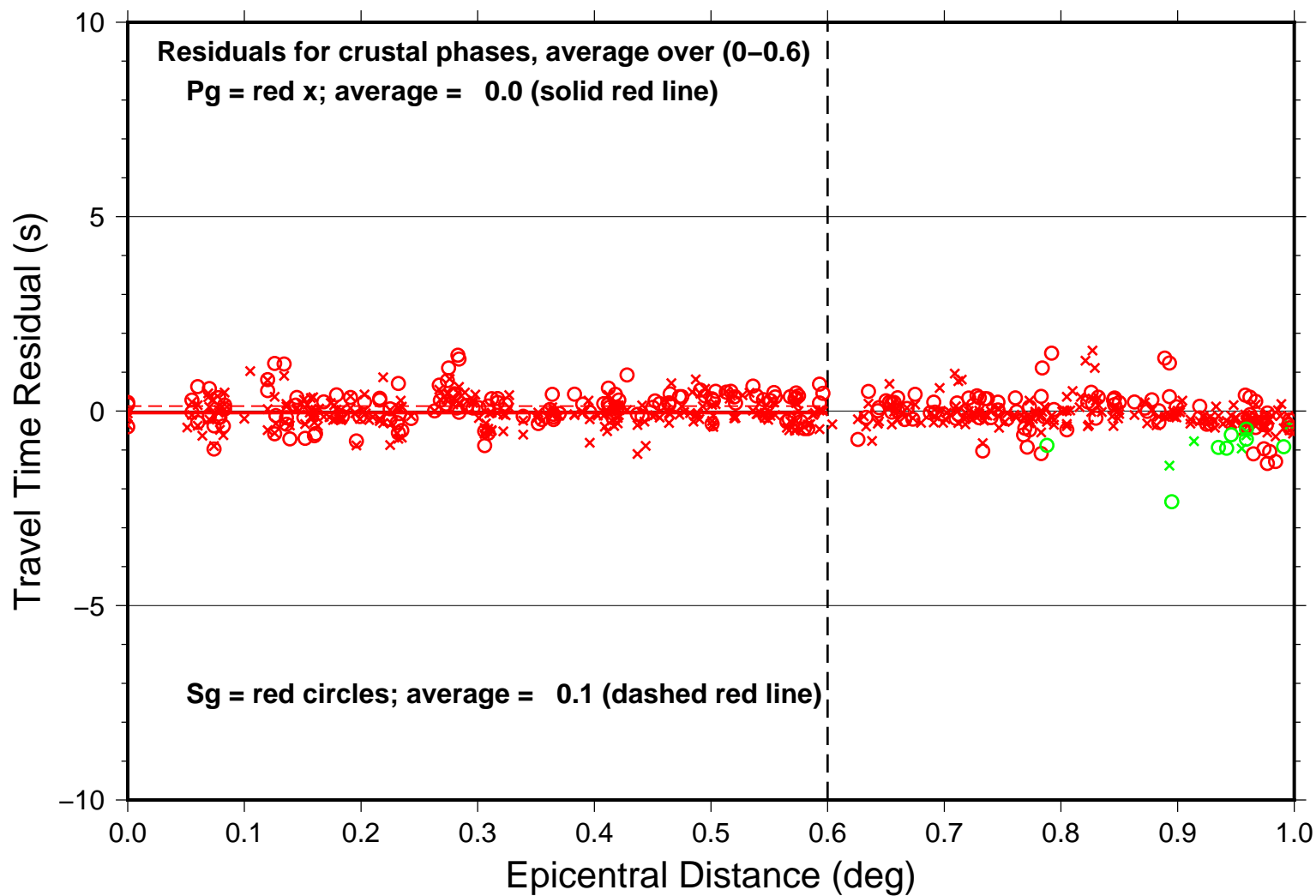
# Summary Travel Times deadsea5.11



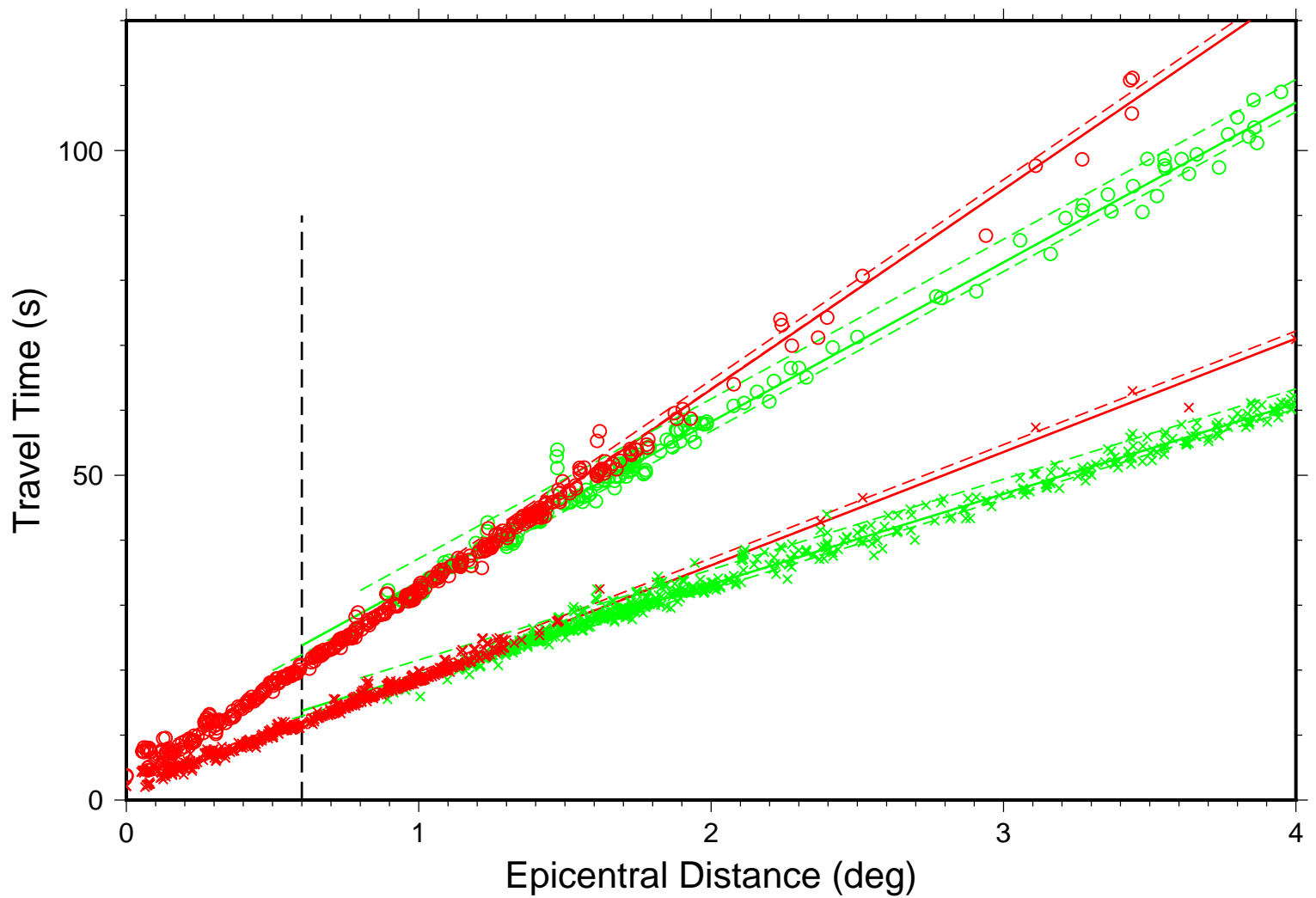
# Teleseismic P deadsea5.11



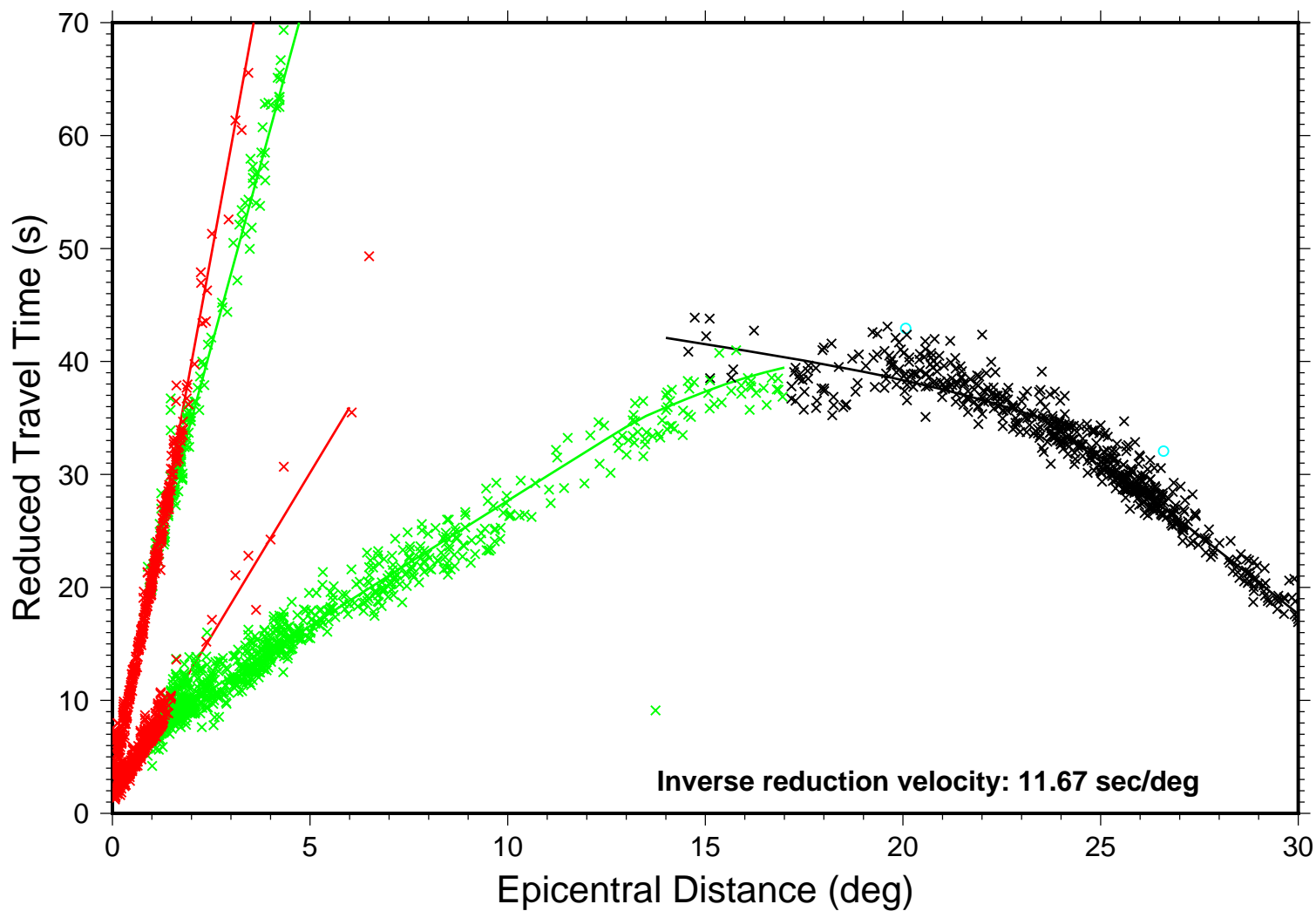
# Near-Source deadsea5.11



# Local Distance deadsea5.11



# Local-Regional deadsea5.11





# Local-Regional Shear Phases deadsea5.11

