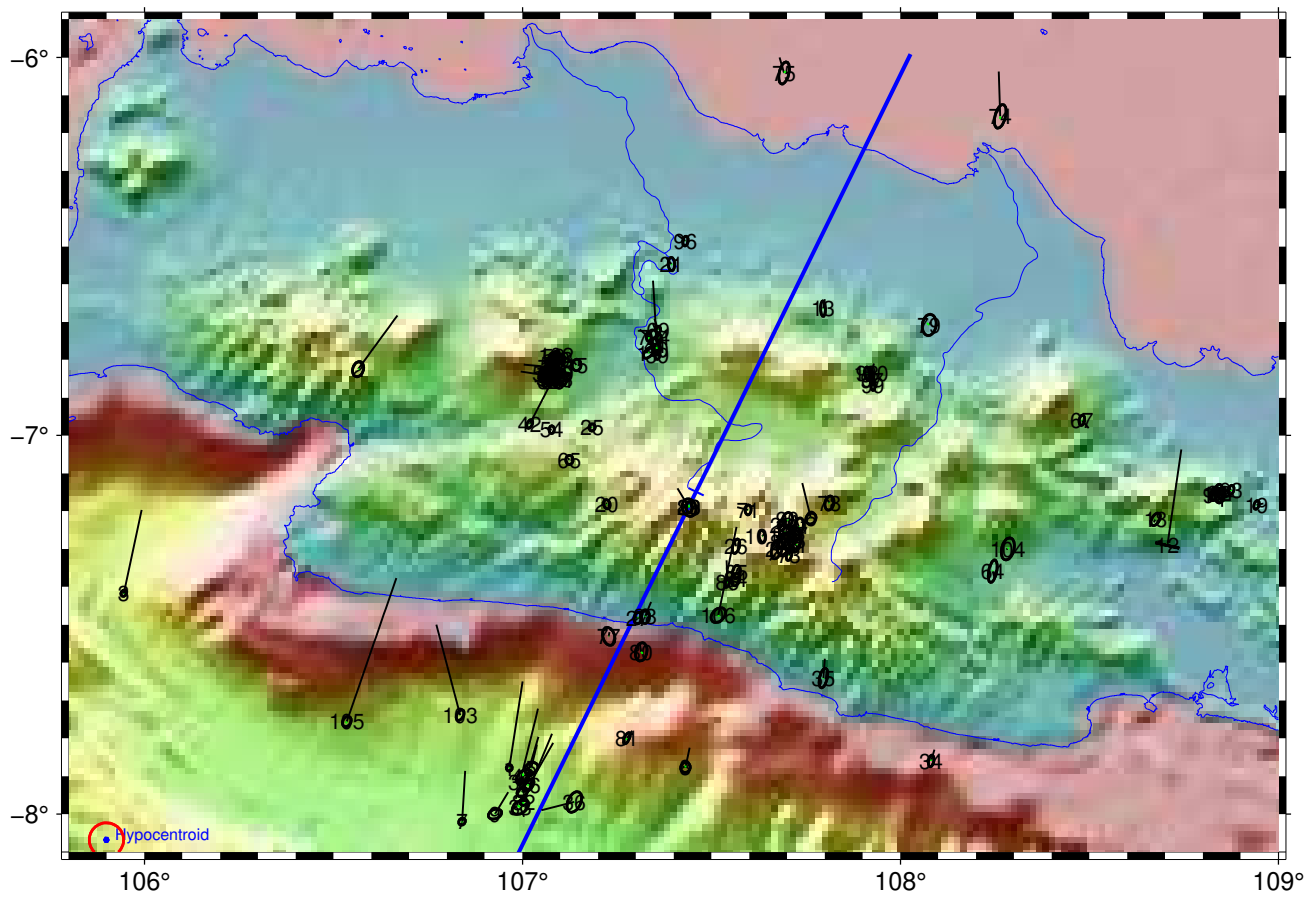
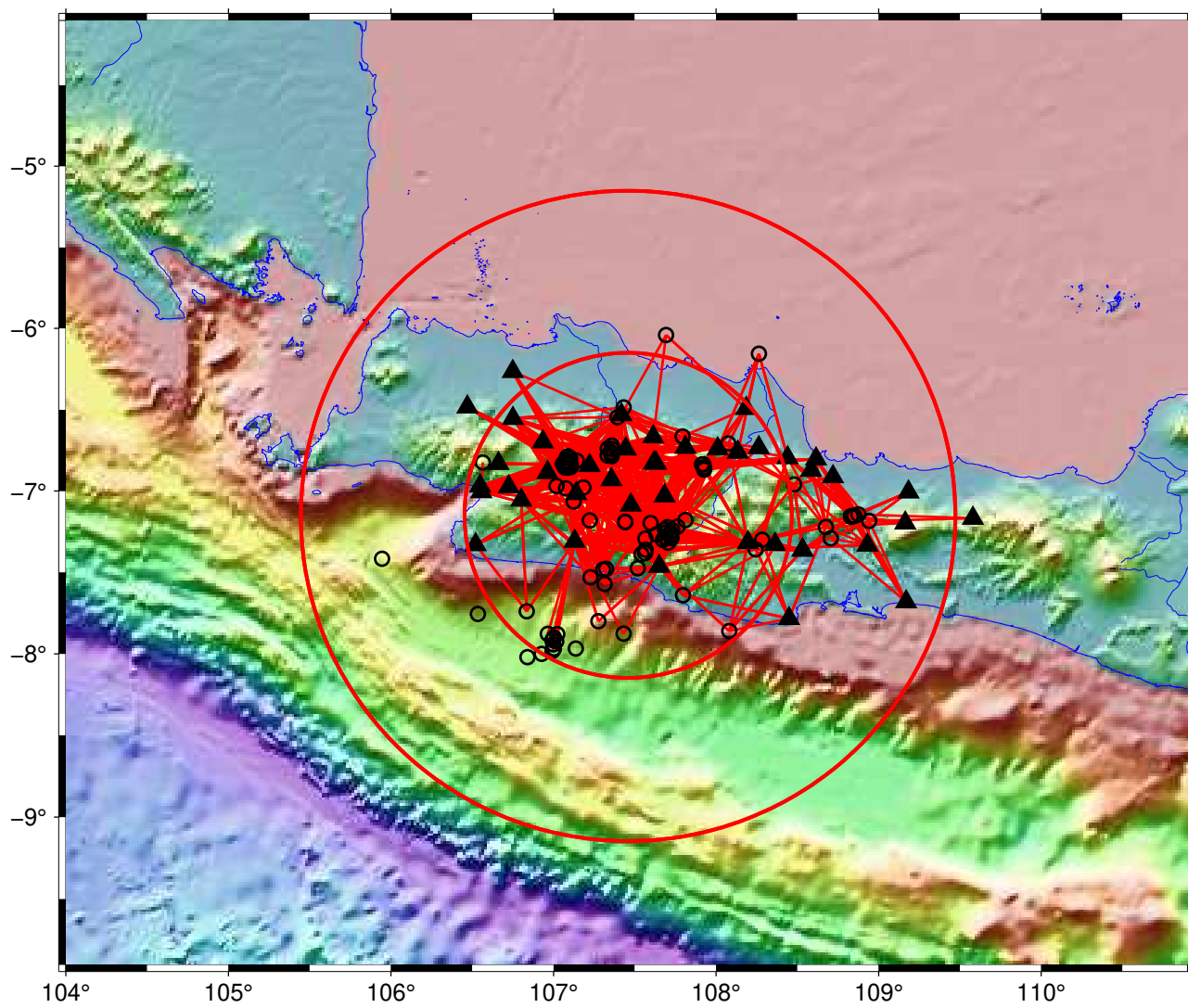


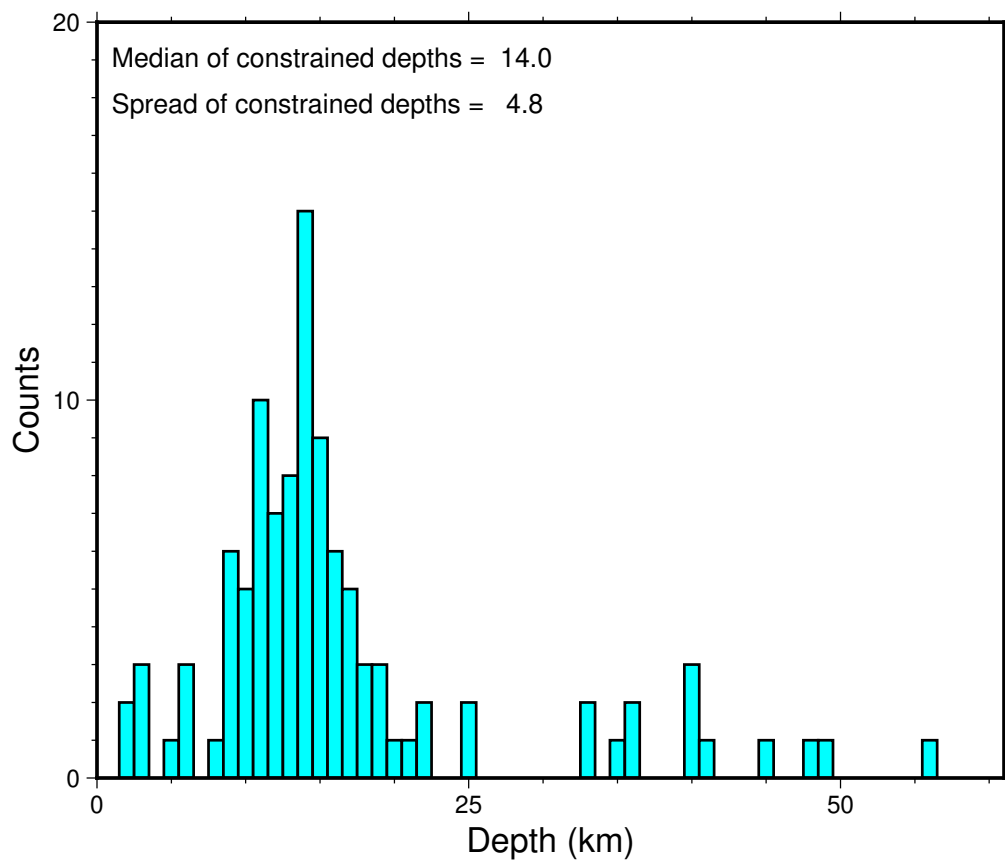
## Base Map bandung1.79



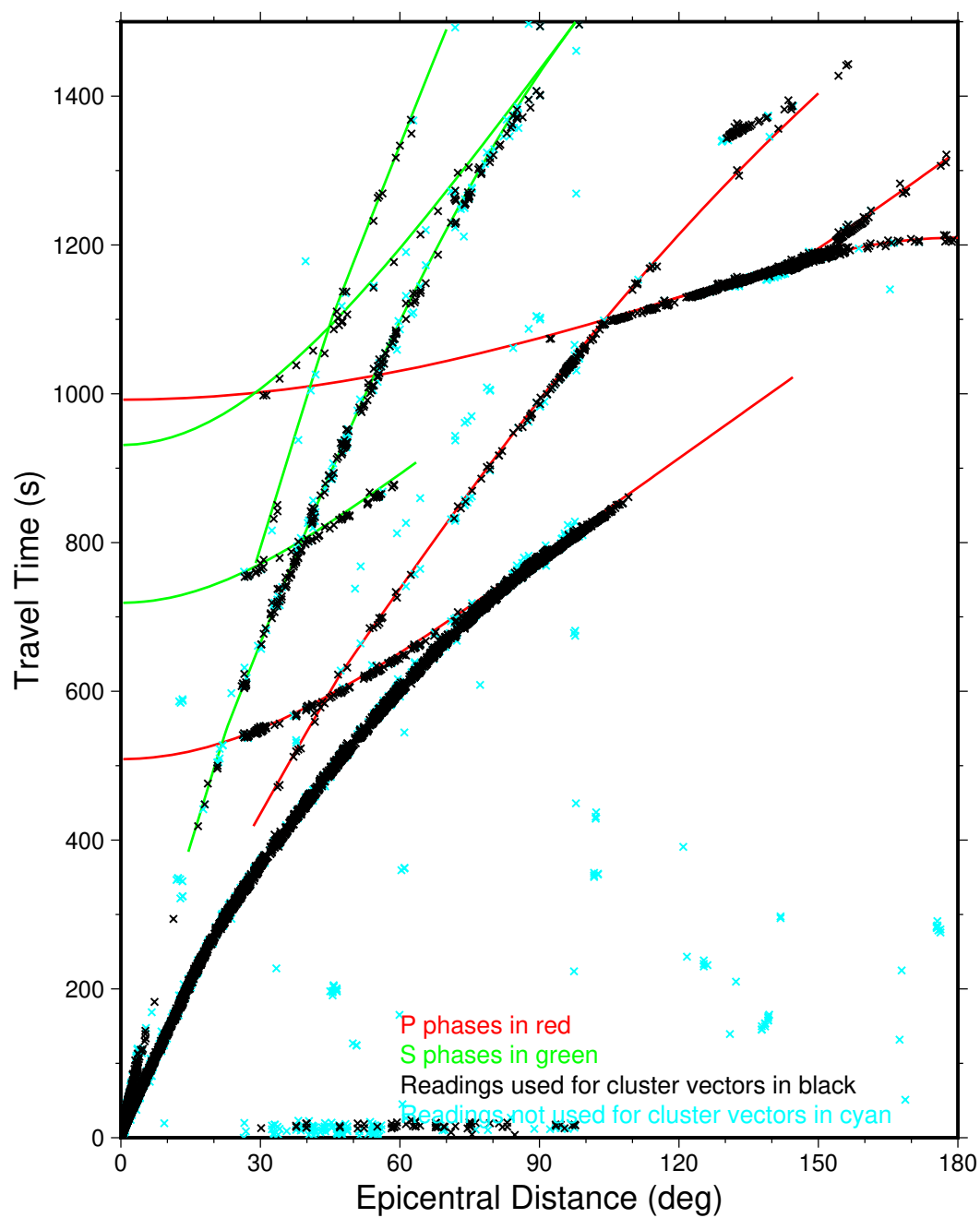
## Direct Calibration bandung1.79



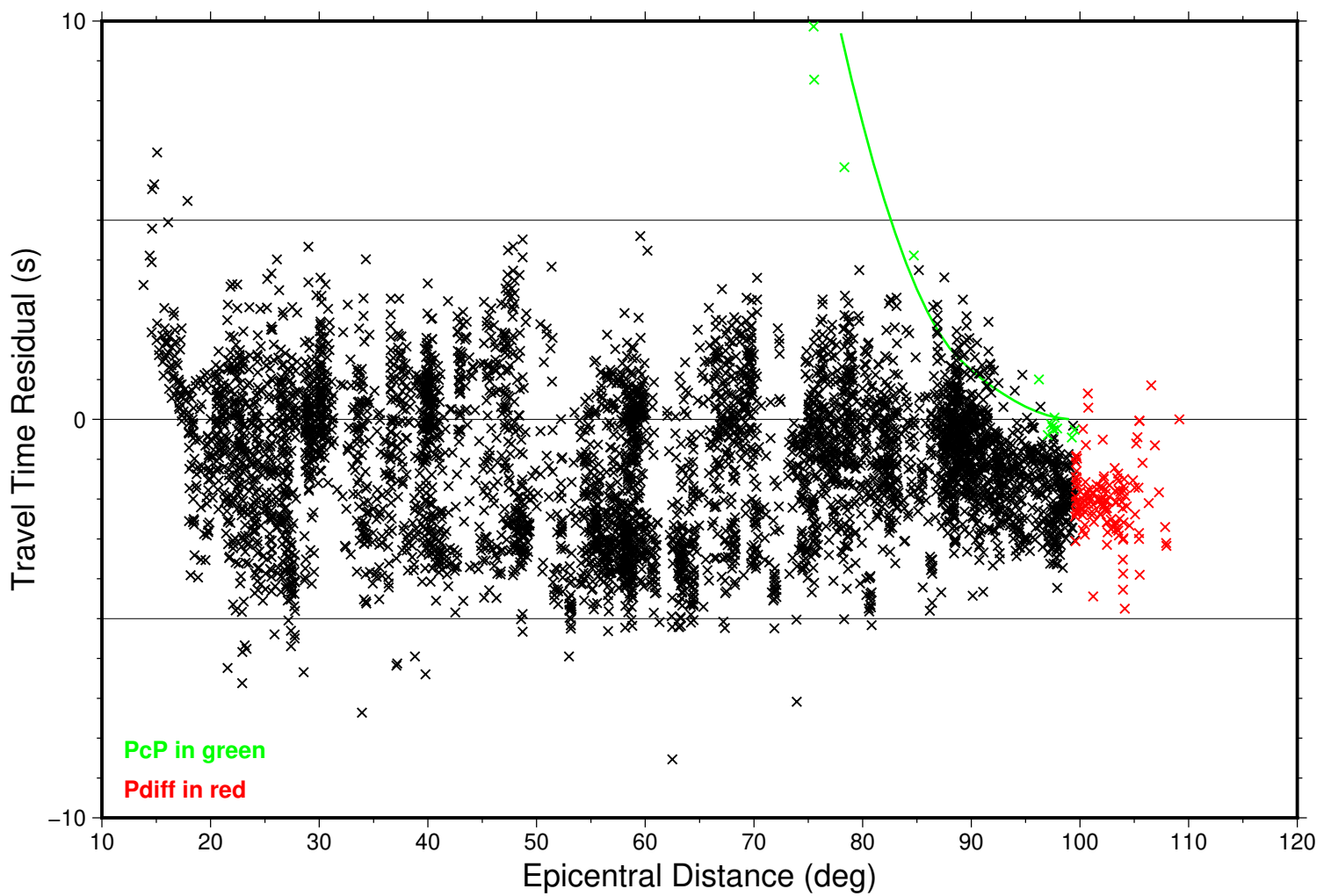
## Focal Depths bandung1.79



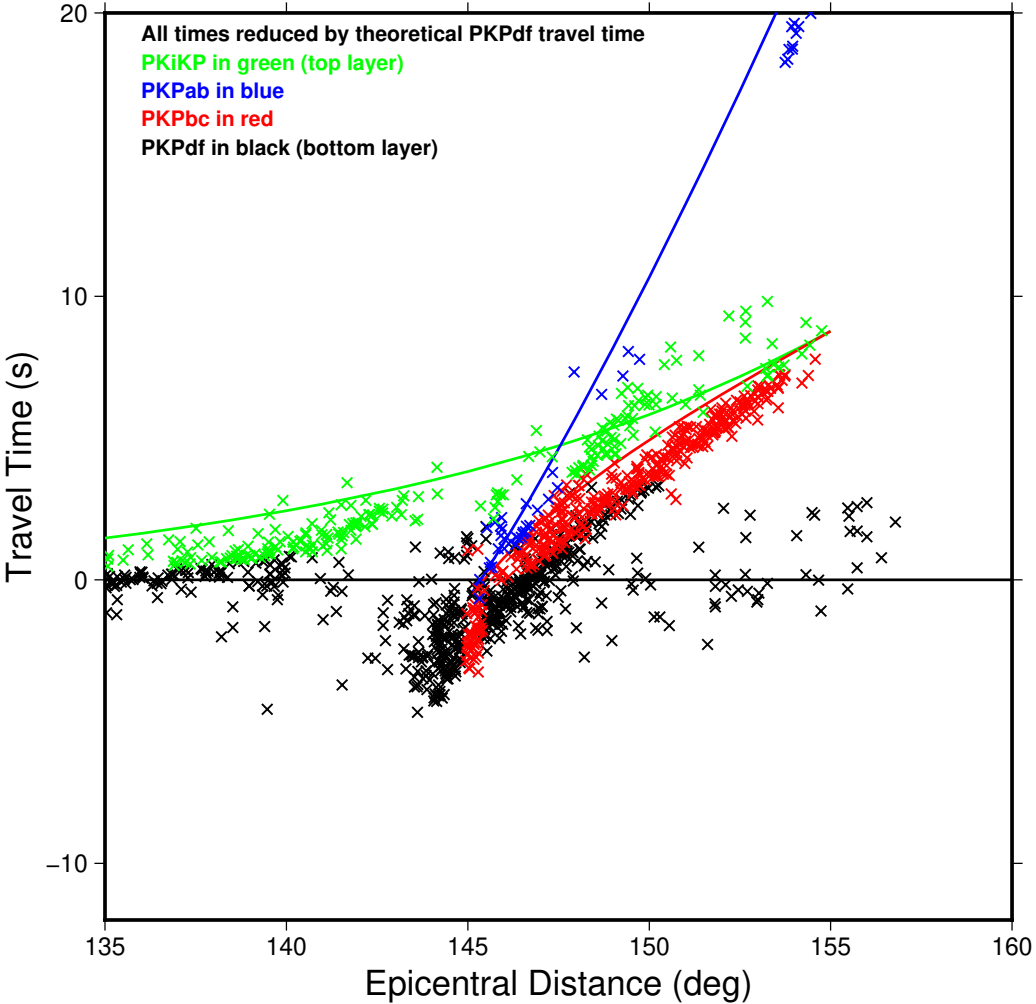
## Summary Travel Times bandung1.79



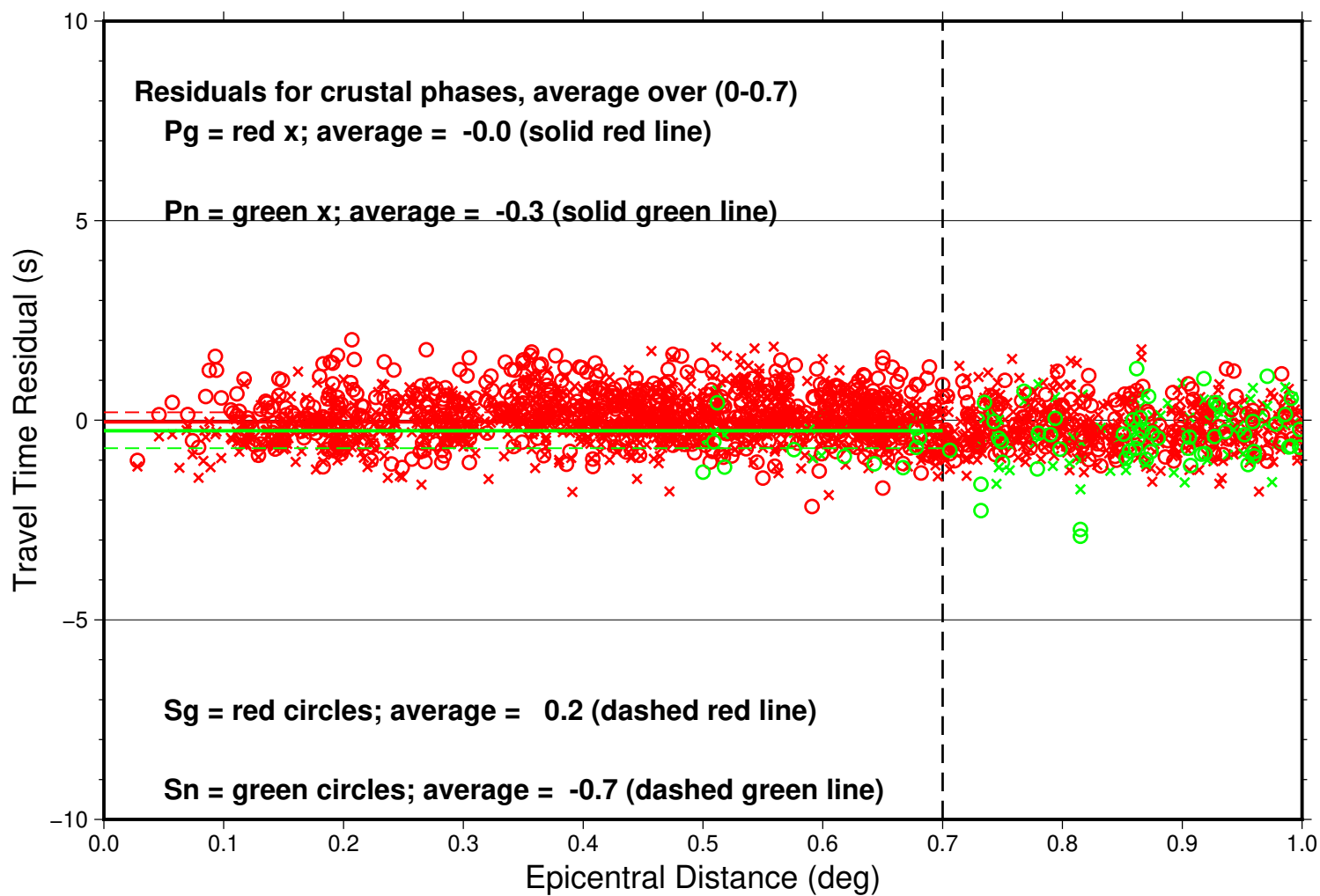
## Teleseismic P bandung1.79



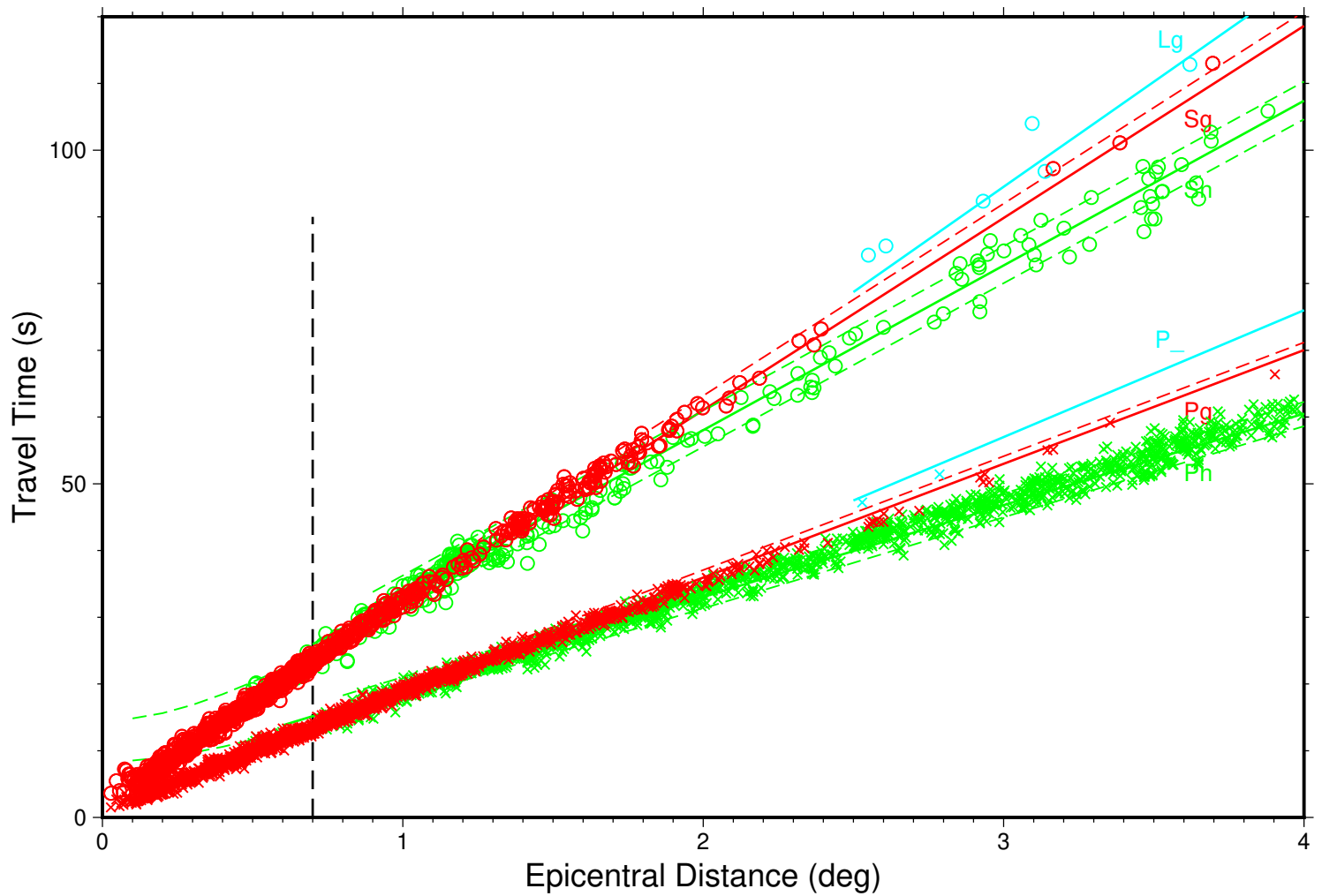
## PKP Caustic bandung1.79



## Near-Source bandung1.79

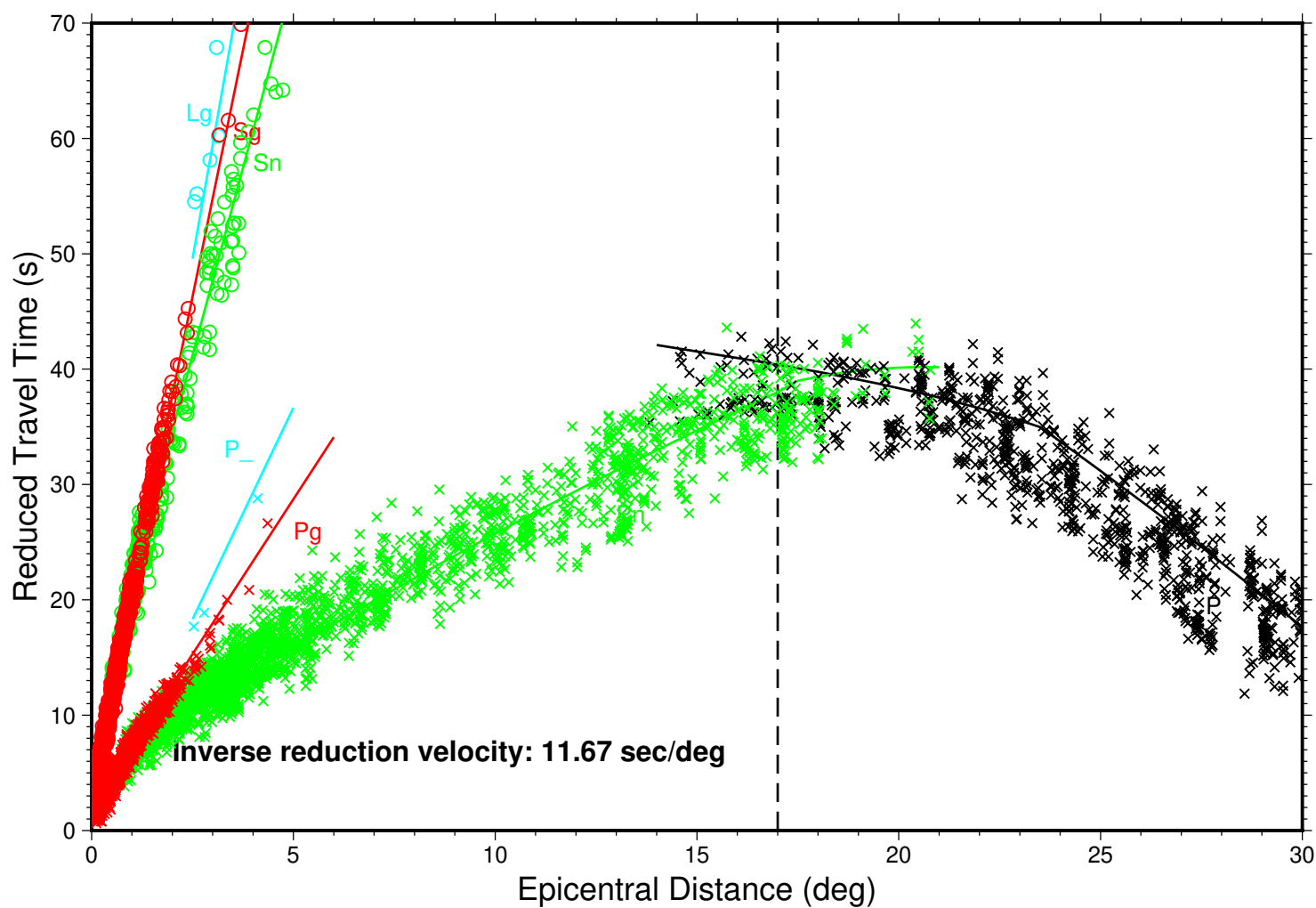


## Local Distance bandung1.79





## Local-Regional bandung1.79



## Local-Regional Shear Phases bandung1.79

